

PLANETJ CORPORATION

WOW 6.3 Installation Guide

TOMCAT * ISERIES* MYSQL

WOW 6.3 Installation Guide

© PlanetJ Corporation
1821 Kelson Place, Escondido CA 92029
Phone 760-432-0600 • Fax 760-432-0600

Table of Contents

License Information	3	
Understanding WOW installation requirements		3
Prerequisites	4	
Required Files for Apache Tomcat	5	
Required Files for MySQL	6	
Installing WOW	7	
Starting WOW	28	
Creating a connection to AS/400 (iSeries)	30	
Creating a connection to MySQL	30	
Creating a connection to ORACLE	31	
Starting MySQL	31	
Starting Apache Tomcat	33	
Moving WOW to another Server:	36	
Troubleshooting Apache Tomcat	39	
Troubleshooting MySQL	40	
Troubleshooting WOW	40	

License Information

Before installing WOW you should read its license, located in the *license60.txt* file included on the docs directory on the WOW Installation CD or the trial download.

Understanding WOW installation requirements

WOW is a web application development tool and consists of two major components.

1. WOW Metadata
 - a. This component contains stored application data such as field descriptors, JDBC connections, and operations.
 - b. “WOW Metadata” is simply a set of database tables.
 - c. The WOW trial version supports WOW Metadata storage on the IBM iSeries UDB and MySQL. Other Metadata storage such as Oracle, IBM UDB for Windows, and SQL Server are supported in other enterprise versions of WOW.
2. WOW Application Code
 - a. This component includes all the WOW Java based system code. WOW is a Servlet and JSP based web application.
 - b. The WOW trial and entry versions only run on the Tomcat application server on a PC. Other application servers such as WebSphere can be configured to work with WOW but require additional setup. WOW can run on ANY Java platform and any system including Windows, iSeries, Linux, Unix, etc. We recommend using a Windows PC for the initial installation. Any WOW programs developed can be moved to other systems when appropriate.

Prerequisites

1. Windows PC (NT, 2000, XP, 2003) with at least 256 MB of RAM and a 400 Mhz or faster processor. WOW components require 150MB of disk storage. (A PC with a slower processor or less RAM may or may not be able to run WOW successfully.) A Windows server with 1GB of RAM and 1.5 or more GHZ processor is recommended.
2. If the PC server will use the iSeries, you must have a TCP connection to the iSeries.
3. If using iSeries, a OS of V4R5 or higher is needed. (Although it has not been tested on earlier OS versions, WOW may run even if the iSeries is running an OS released prior to V4R5.)
4. The iSeries must have host servers running. Host servers can be started using the STRHOSTSVR (*ALL) command. TCP must be running and can be started with the STRTCP CL command.
5. If the iSeries is being accessed through a firewall, the following ports must be open to allow WOW to access iSeries resources. Generally, if Operations Navigator is able to access the iSeries, WOW will be able to as well since they use the same ports and host servers.

PC Function	Server Name	Port Non-SSL	Port SSL
Server Mapper	as-svrmap	449	449
Database Access	as-database	8471	9471
Data Queues	as-dtaq	8472	9472
Remote Command	as-rmtcmd	8475	9475
Signon Verification	as-signon	8476	9476

INSTALLATION OF WOW USING APACHE TOMCAT WEB APPLICATION SERVER

This chapter describes the required material for WOW to run with Apache Tomcat as the Web Application Server.

Required Files for Apache Tomcat

There are three main components that must be installed to run WOW on the PC using Apache Tomcat (These files are all included on the CD and download files and are automatically installed during installation):

Component	Description
Java 2 SDK v1.4.2(or latest version)	This file contains all of the necessary files to run Java applications on your PC and is required by Apache Tomcat.
Jakarta Tomcat 5.0.19(or latest version)	This is the installation file for Apache Tomcat Web Application Server.
WOW Resource Files	The <i>wowxx</i> directory contains all of the necessary files for WOW to run correctly. For example: folder wow63 contains WOW code for version 6.3.

The WOW installation process will guide you through how to install Apache Tomcat.

INSTALLATION OF WOW STORING METADATA IN MYSQL

This chapter describes the required material for WOW to run utilizing MySQL as the metadata storage system.

Required Files for MySQL

There are two main components that must be installed to run WOW on the PC using MySQL (These files are all included on the CD and trial download and are automatically installed during installation):

Component	Description
MySQL 4.0.1.7 (or Current Version)	This is the installation file for MySQL.
MySQL Resource Files	The <i>mysql</i> directory contains all of the necessary metadata database files for WOW to run

The WOW installation process will guide you through the MySQL installation.

This chapter walks users through the WOW installation process.

Installing WOW

1. Load the CD into your CD ROM drive and the WOW Installation will automatically begin. If it does not automatically start, look at the root of the CD and double click on the WOWInstall.bat. If you have downloaded a copy of WOW, you need to unzip the downloaded file into any temporary directory. Next, locate and double-click on the WOWInstall.bat file. It will be in the WOWInstall directory. If you cannot find the WOWInstall.bat file, please do a search for files or folders named WOWInstall.bat
 - a. ****NOTE**** If using MySQL for WOW Metadata please make sure you have successfully created a WOW user profile as instructed.
2. The initial start-up process may take several seconds up to a few minutes to start depending on your system's performance.
3. The screen that will appear after the please wait... window will be a welcome screen.

****NOTE** Please read this screen carefully as you may lose data from your existing Apache Tomcat and MySQL installations. The mysql database in the "data" directory of the MySQL install will be overwritten by the installer if you choose MySQL for your Metadata. You must backup this file.**



Figure 1 - WOW Installation Disclaimer

4. The next screen will be the license agreement such as the one shown below. Please read the license agreement carefully and to accept the terms, click I Agree.

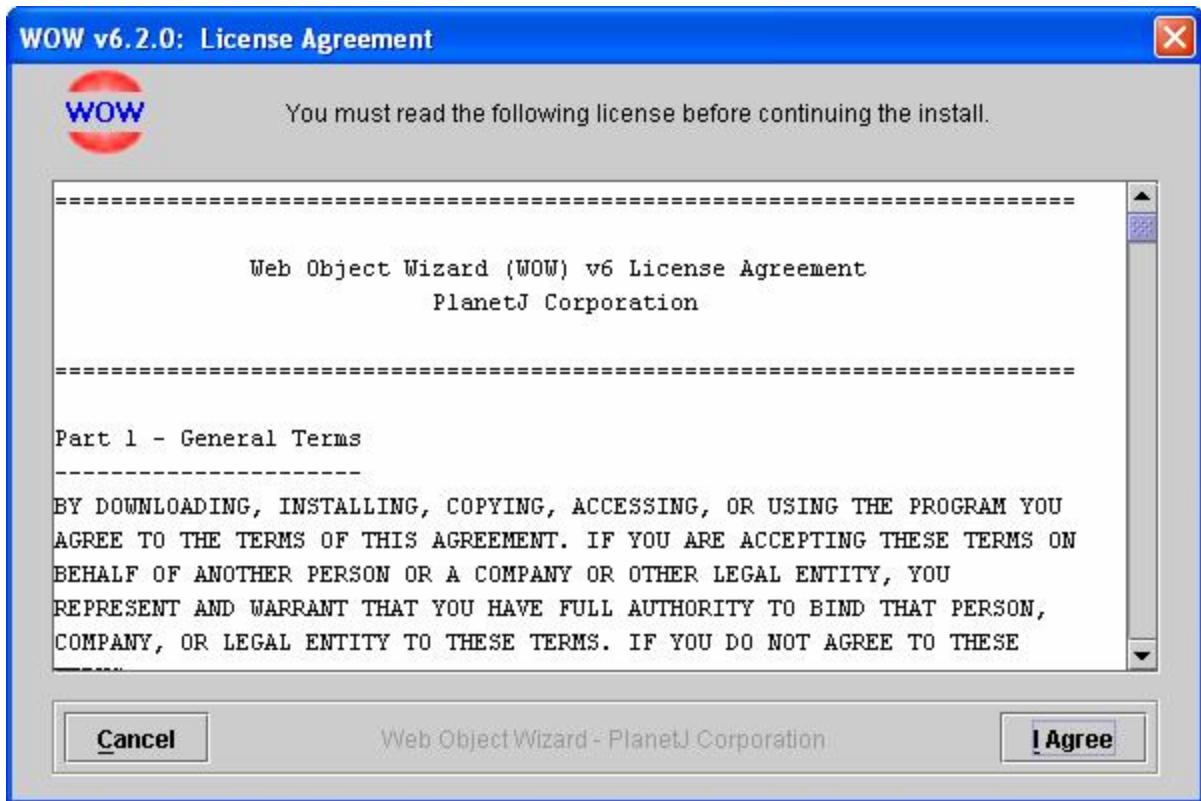


Figure 2 - WOW License Screen

5. If you do not have our recommended SDK version already installed, you will be asked to install it. If you choose to install it, you will be prompted for a directory to install the SDK in. The default directory is `C:\j2sdk1.4.2_04`, as shown below. You can install in a different directory if you wish.

****NOTE** If you currently have a previous version of J2SDK installed, we recommend you uninstall that version and install the version we have included in our WOW install program. WOW may or may not work with previous version of J2SDK. If you have a later version of the SDK already installed, you can choose not to install this version of the SDK by choosing the No button.**

6. Continue clicking next and choosing the default values that are given; this will eventually complete the install of the Java 2 SDK v1.4.2. (or newest version) Do not restart your system if you are prompted to do so yet.
7. For more information on Java 2 Runtime, version 1.4 visit the Java 2 website at: <http://java.sun.com/j2se/1.4/>
8. Next, if you do not have our recommended Apache Tomcat version already installed, you will be asked to install it. If you already have Apache Tomcat 5 installed, we recommend backing up all critical files located in the Apache Tomcat directory. This is very important. The WOW installation will be writing files to `Apache Software Foundation\Tomcat 5.0\webapps\`. If you already have Tomcat installed, make sure it is not running.

****NOTE**** If you currently have a previous version of Apache Tomcat installed, we recommend you uninstall that version and install the version we have included in our WOW install program. **WOW** may or may not work with previous version of Apache Tomcat. If you have a later version of Tomcat already installed, you can choose not to install this version of Tomcat by choosing the No button when prompted to install Tomcat.

9. The initial Tomcat Setup Wizard screen will appear. Click Next to proceed. A screen will appear asking you to read over the license agreement. After reviewing the license agreement, click the “I Agree” button. This will bring you to a screen, which will be similar to the screen below.

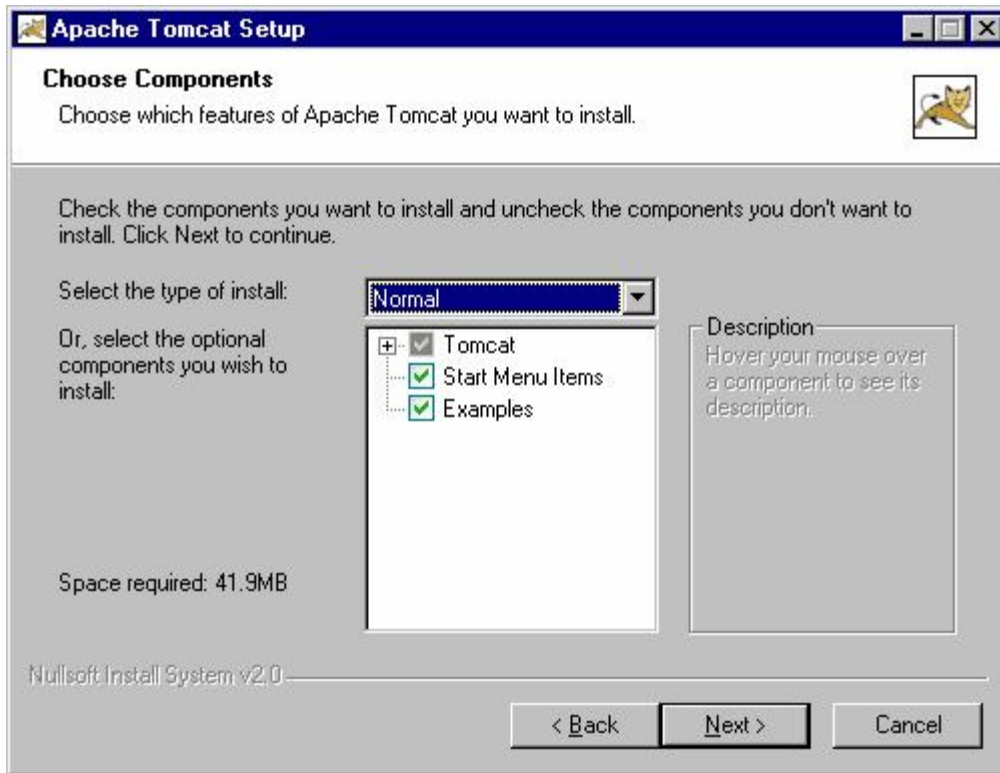


Figure 3 - Apache Tomcat Installation Options

10. After clicking the NEXT button the installation program will ask where to install the appropriate files. The default value like the one shown below should be used. Click the INSTALL button to begin the installation of Apache Tomcat.

****NOTE**** It is best to install Apache Tomcat in its default directory so the configuration of WOW goes smoothly, however make sure you either install Apache Tomcat to a root drive such as *D:\Apache Software Foundation\Tomcat 5.0* or in the program files directory such as *E:\Program Files\Apache Software Foundation\Tomcat 5.0*

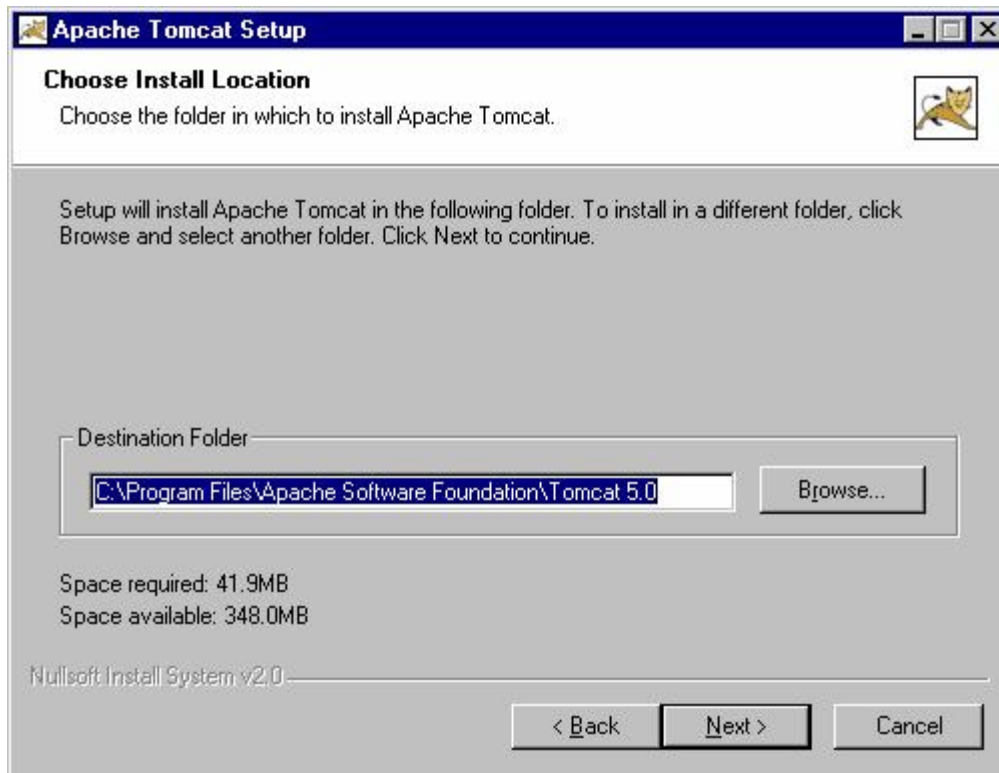


Figure 4 - Apache Tomcat Installation Directory

11. After clicking the Next button, the program will prompt you for a password to access Tomcat as shown below. Keep all of the default values the same. If another program is using port 8080, change the port number and continue. Do not restart your system if you are prompted to do so. The port specified has the significance of effecting the URL used to access WOW through Tomcat. For example, leaving the port defaulting to 8080 would mean that you would access WOW using a URL similar to: <http://localhost:8080> This port can be changed at anytime by modifying the Tomcat config file found at .../conf/server.xml.

****NOTE** Remember the port number because you will need it later when configuring WOW. We recommend using any port between 8080 – 8090 or port 80 if you know it is not being used. Often Windows servers will have Microsoft IIS running on port 80 which will cause a conflict which is why we recommend port 8080. To check, simply open a browser and enter this url: <http://localhost>**

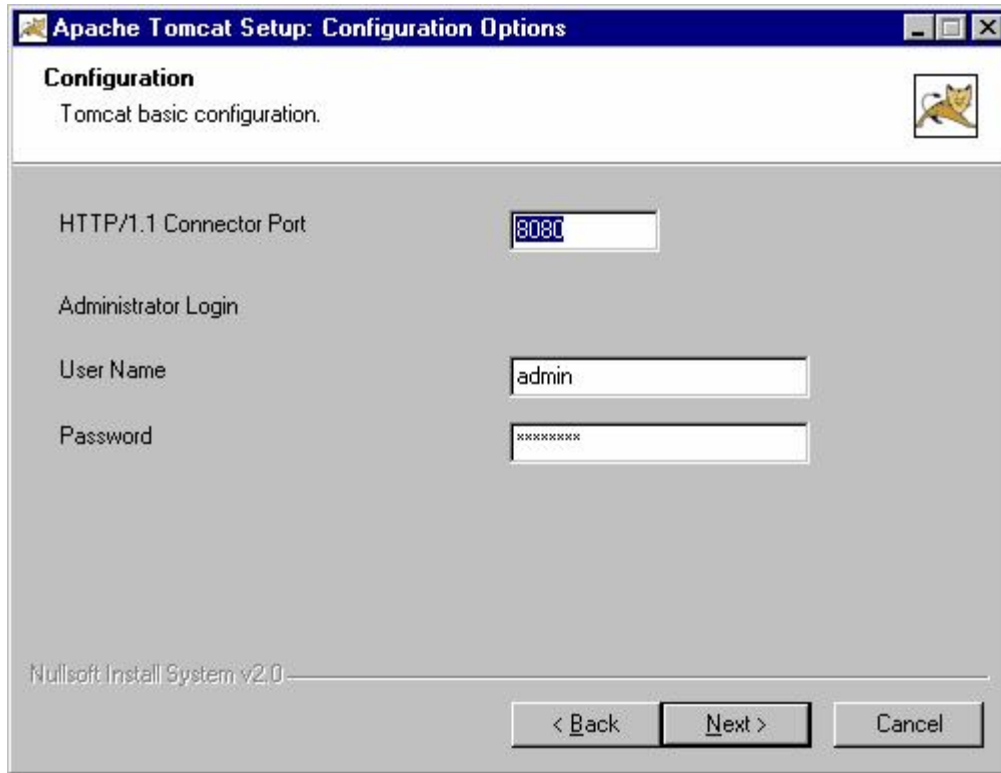


Figure 5 - Apache Tomcat Installation Administration

Record Tomcat Configuration Below:

Tomcat install directory: __C:\Program Files\Apache Software Foundation\Tomcat 5.0

If changed: _____

Tomcat port: _____

Tomcat user name: _____

Tomcat password: _____

This info

12. After clicking the Next button, the installer will prompt for the location of the JVM. It is important that you specify the location of a JDK rather than a JRE. A JRE does not contain the files needed to compile the JSPs (specifically *javac*). Depending on which JDK you have installed, the location specified here may vary.

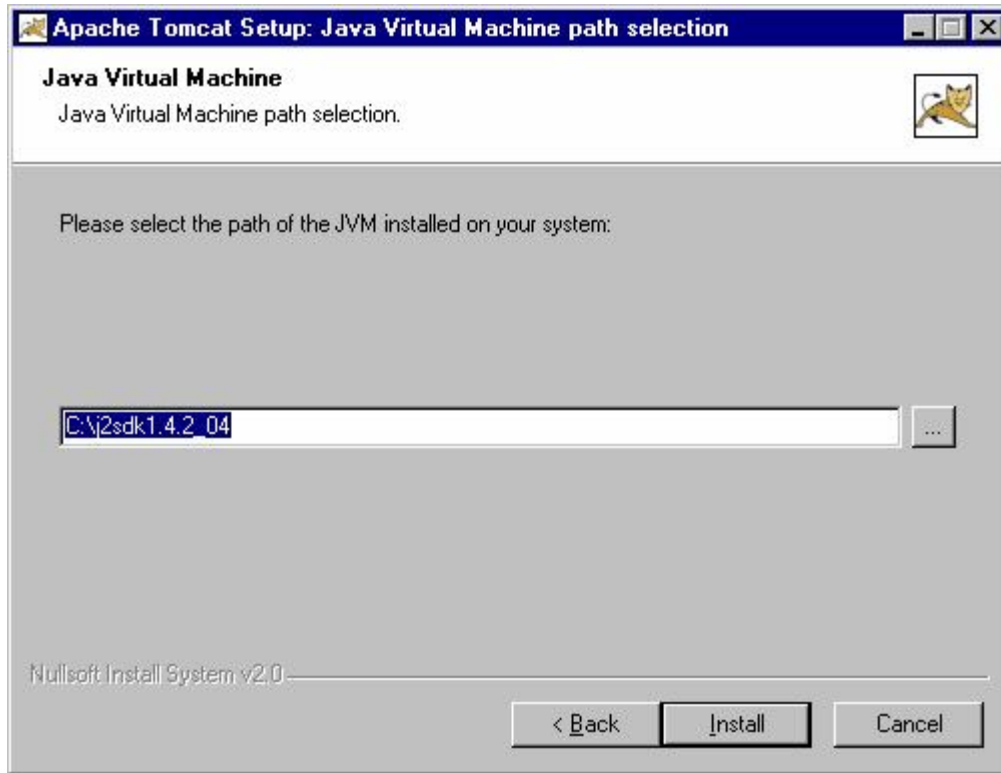


Figure 6 - Apache Tomcat Installation JDK

13. After clicking the Next button, the installer will ask if you want to “Run Apache Tomcat”. **YOU MUST UNCHECK THIS OPTION** for the WOW Install to complete properly!! **If Tomcat is started automatically in this step, you MUST STOP IT AND RESTART Tomcat before WOW will be operational.** It is up to you whether or not you show the readme file. Click Finish to complete the Tomcat install.

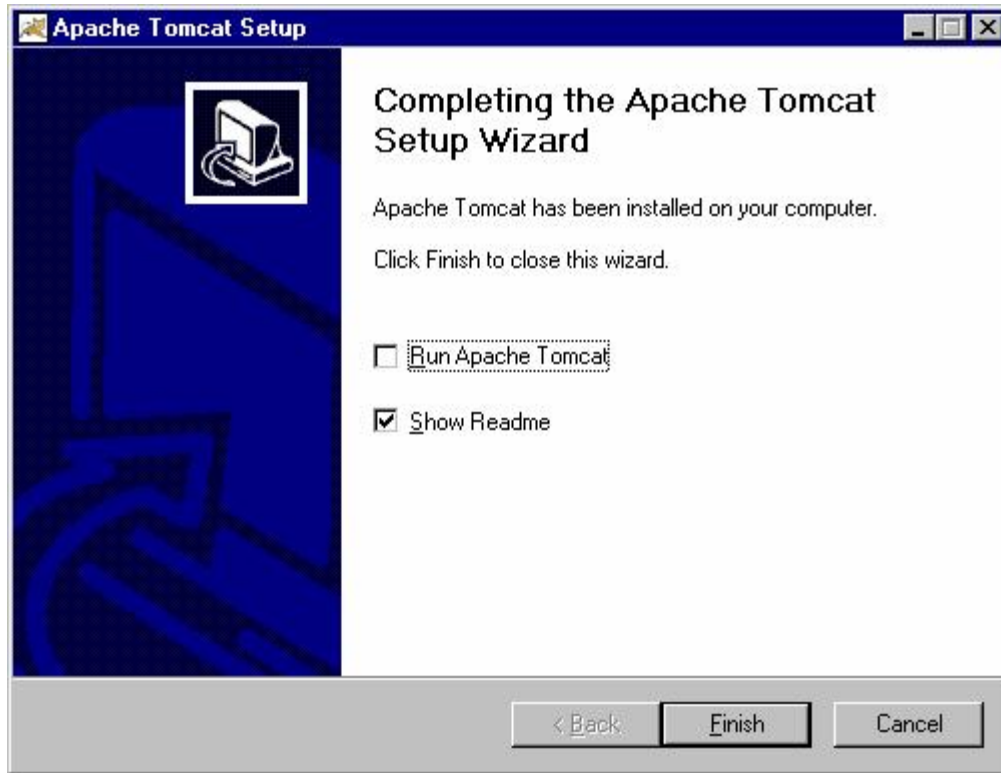


Figure 7 - Apache Tomcat Installation Final Screen

14. The next screen you should see should look similar to the screen below. This screen is responsible for selecting the appropriate WOW metadata system. This is very important. If you want your WOW metadata store locally in a MySQL, choose the MySQL radio button (this will ask to install MySQL on your PC). Click OK once you have made your selection.

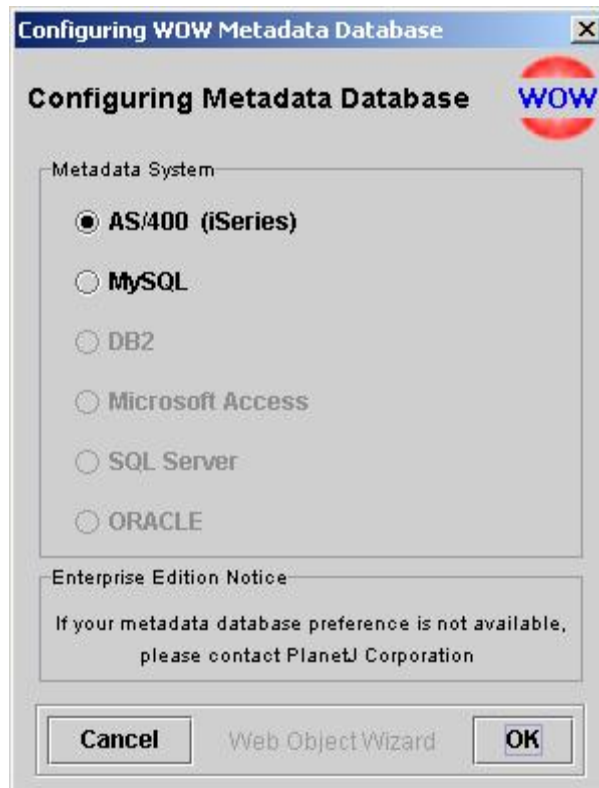


Figure 8 - Configuring WOW Metadata Screen

15. **For iSeries WOW Metadata Users:** The next step is to FTP AS/400 savefiles to your WOW metadata system. This will happen automatically. Please be prepared to enter your WOW iSeries metadata system name, user id, and password. For the user id and password, you should be using the WOW user profile. Please be aware this process may take up to 30 minutes depending on your internet connection speed to the system. On most machines it takes only a few minutes. This process will run the following commands in this order: CRTSAVF FTP RSTLIB DLTF If you currently have a PJSYS63 or PJSYS63 libraries on your system, the installation will skip this step and will not overwrite any existing PJSYS63 or PJSYS63 libraries. You will see a prompt like the one below. The DLTF command simply deletes the file created during CRTSAVF.

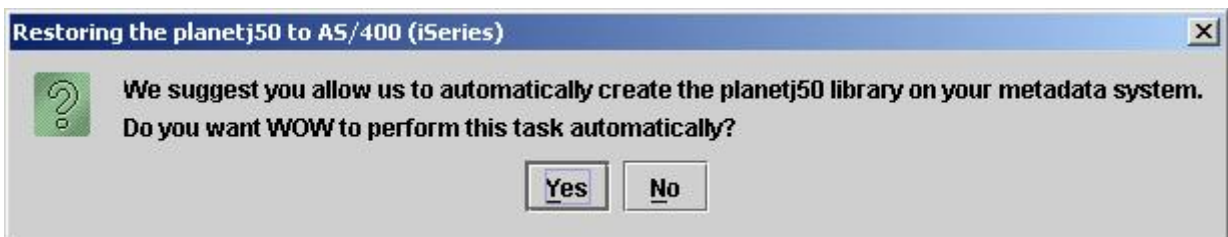


Figure 9 - Prompt to ensure you want to restore planetj50 automatically

16. **For iSeries WOW Metadata Users:** If you do not want to have the WOW Installation automatically restore the metadata libraries, select No, otherwise choose Yes. If you choose No, you will have to

restore the libraries manually. See chapter 2 for instructions on how to restore the metadata libraries manually. If you choose Yes you will be presented with the following screen.

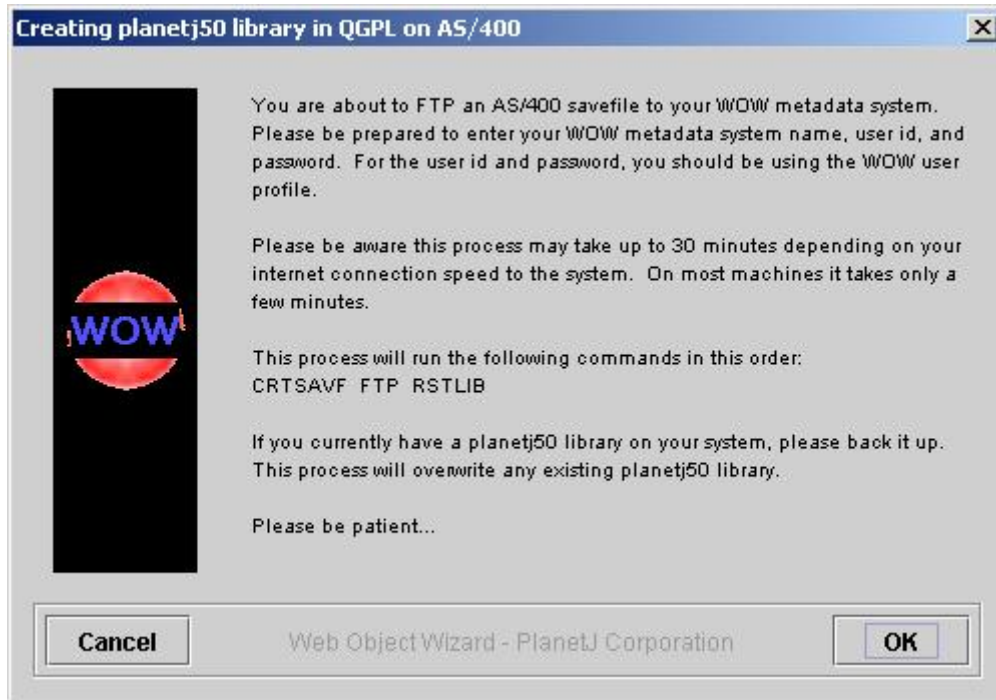


Figure 10 - Restoring library warnings

17. **For iSeries WOW Metadata Users:** Click OK to continue. The next step you need to do is enter a valid sign on to your WOW Metadata System. You will be presented with a screen that is similar to the one below. The system can be either an IP address or the name of the system if it is available on your network.

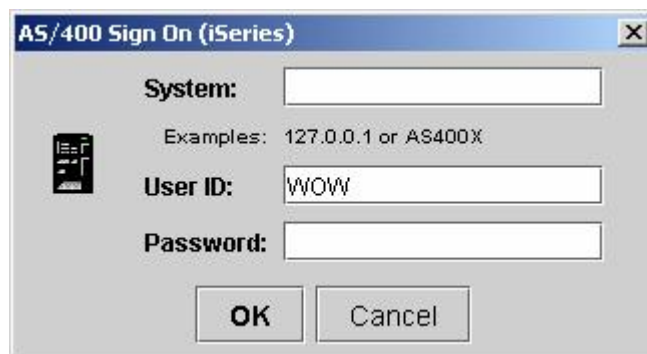


Figure 11 - iSeries Sign On

18. **For iSeries WOW Metadata Users** After clicking ok to the Sign On screen, the restore library process will begin. This process may take up to 30 minutes depending on the internet connection

speed to the system. However, on most machines this only takes a few minutes. Please be patient with the restore library process. You will see a screen similar to the screen below.

NOTE: IF YOU SEE A MESSAGE INDICATING THERE WAS AN ERROR WITH THE RESTORE TO THE ISERIES, IT MAY SIMPLY BE AN AUTHORITY WARNING INDICATING THE OWNERSHIP CHANGES OCCURRED. IF LIBRARIES PJSYS63 AND PJSYS63 EXIST ON YOUR ISERIES AFTER THIS STEP, THE INSTALLATION WAS SUCCESSFUL AND YOU CAN IGNORE THE ERROR/WARNING MESSAGE.

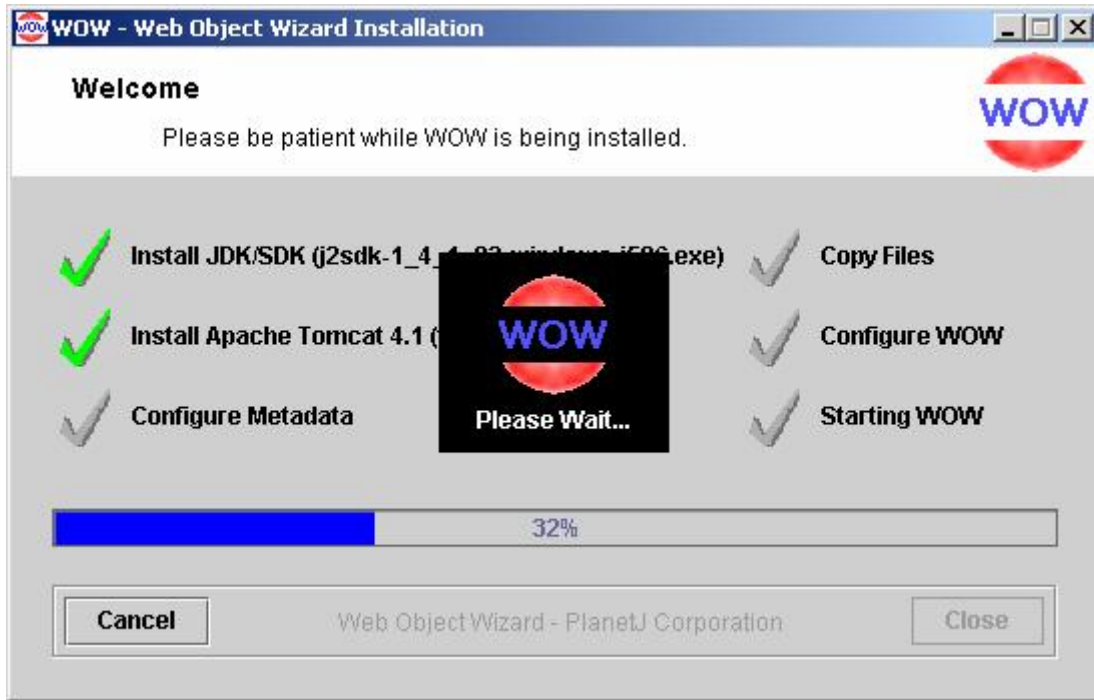
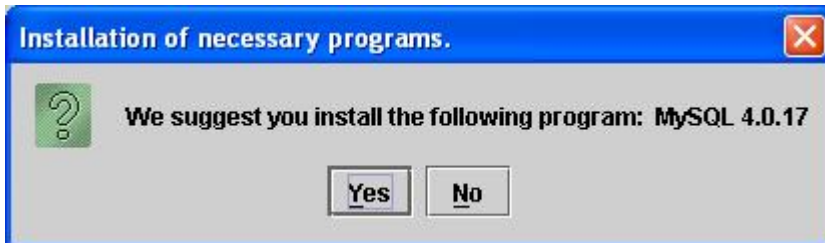


Figure 12 - Please Wait window displayed during restoration of planetj50 library

19. **For MySQL WOW Metadata Users:** If you do not already have MySQL installed, you will be asked to install it. If you already have MySQL installed, make sure you back up all your data. **This is very important.** The WOW installation will put files into the *mysql\data* folder so please be sure you have backed up all data in that folder. You may also want to back up the *my.ini* file located in *C:\WINDOWS* or *C:\WINNT*. The current *my.ini* file will be renamed to *myOLD_X.ini* where X indicated a number. Also make sure the MySQL service is stopped.



****NOTE** If you currently have a previous version of MySQL installed, we recommend you uninstall that version and install the version we have included in our WOW install program. WOW may or may not work with previous version of MySQL.**

20. **For MySQL WOW Metadata Users:** If you choose to install MySQL, you will be presented with the following screens.



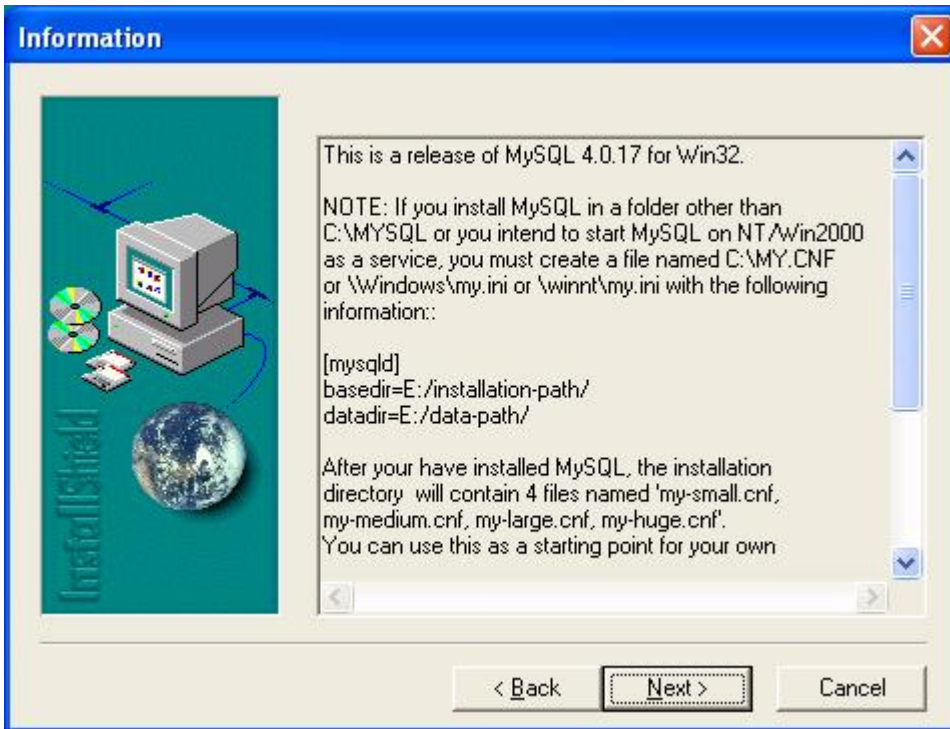


Figure 13 - MySQL Installation Screens

21. **For MySQL WOW Metadata Users:** For the following screens, make sure you install MySQL to a root drive such as *D:\mysql* or in the program files directory such as *C:\Program Files\mysql*. Next, choose your setup type and press next to start the installation of MySQL

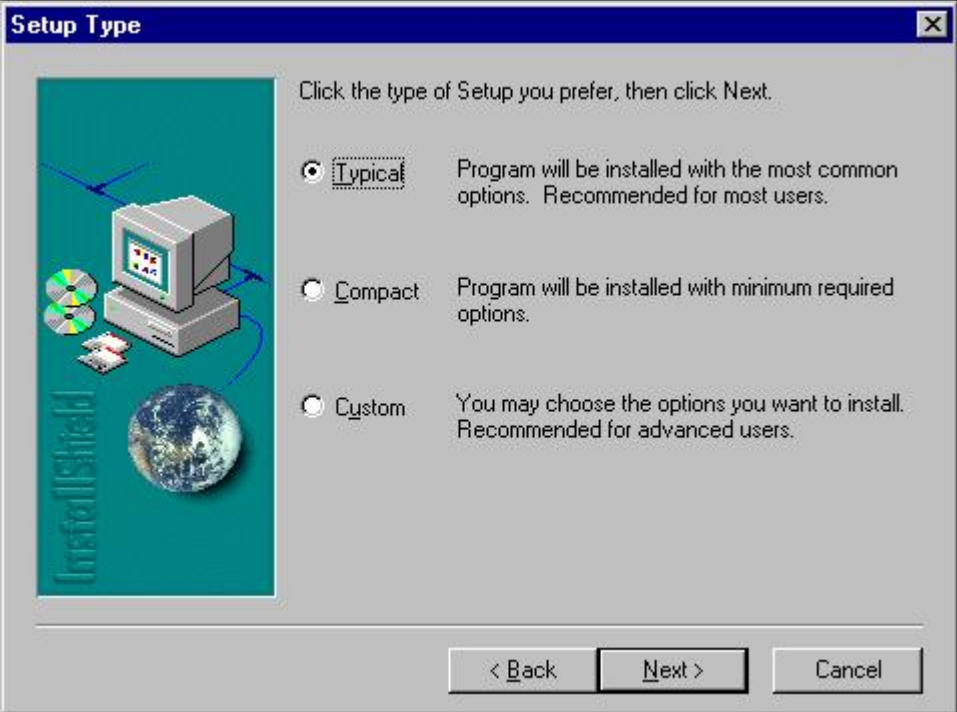




Figure 14 - MySQL Directory & Configuration Screens

22. **For MySQL WOW Metadata Users:** After MySQL has completed the install, you will be brought back to the WOW Installer. You will see a dialog asking if MySQL was installed correctly. Proceed past this dialog only after MySQL has been fully installed. The dialog is similar to the one below. If everything went fine, click Yes.



Figure 15 - MySQL Installation

23. Next you will be presented with the Installation Options Dialog. You may choose to install an optional program called the SQL Assistant. If you choose to do so, refer to the **SQL Assistant Installation Guide.pdf** in the <WOW CD>\sqlassistant\docs directory. The WOW SQL assistant is a utility that allows WOW SQL operations to be built in a point and click fashion. We recommend you install it.



Figure 16 - WOW Installation Options Screen

24. The next screen you will see briefly is your progress screen similar to the one below. This screen will always be in the background throughout the installation process.

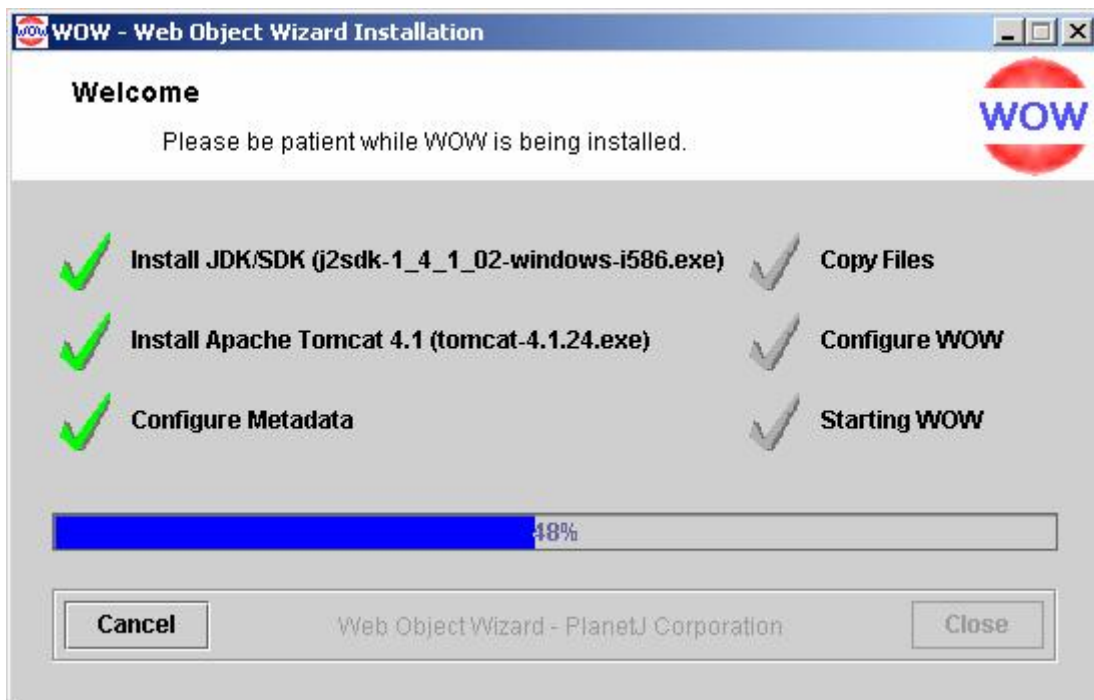


Figure 17 - WOW Installation Progress Screen

25. Next we need to configure WOW and this is accomplished via our configuration dialog as seen below. Enter the name of your system where you restored the WOW metadata to in the **WOW Metadata System** field. The Webserver Location must point to the Apache Tomcat install root (the folder prior

to the *webapps* directory). The default location is: *C:\Program Files\Apache Software Foundation\Tomcat 5.0*. For the Webserver Port Number, make sure you specify the port number you set when Tomcat was installed. Both the Webserver Port Number and Webserver Location should default to the correct values unless you changed the defaults.

For MySQL WOW Metadata Users: Here you must set the WOW Metadata System to `jdbc:mysql://localhost/pjsys63`. You can either copy and paste it from here or click on the Example text on the screen (to the right of the red arrow) and it will put that value (`jdbc:mysql://localhost/pjsys63`) in the text box for you if the WOW Metadata System text field is blank. This will also put `wow` (lower-case) in the password field for you if the Password text field is blank. For a User Id and Password, you must use `WOW` (upper-case) for the User Id and `wow` for the password. ****NOTE**** These values are case sensitive. You must have the User Id capital `WOW` and the Password lower-case `wow`.

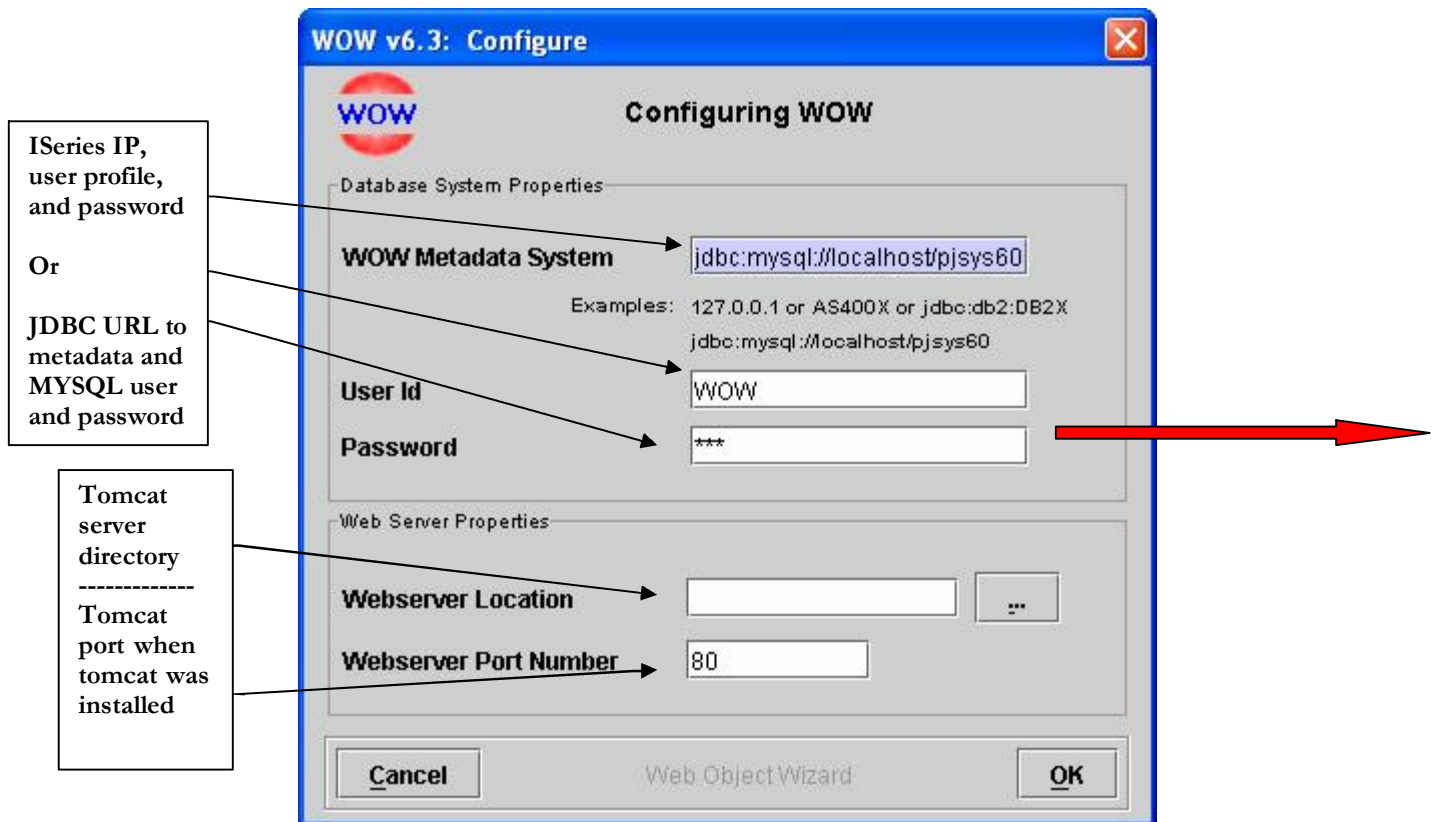


Figure 18 - Configuring WOW Screen

26. **For MySQL WOW Metadata Users:** The next screen you should see briefly is the WinMySQLAdmin screen similar to the one below.

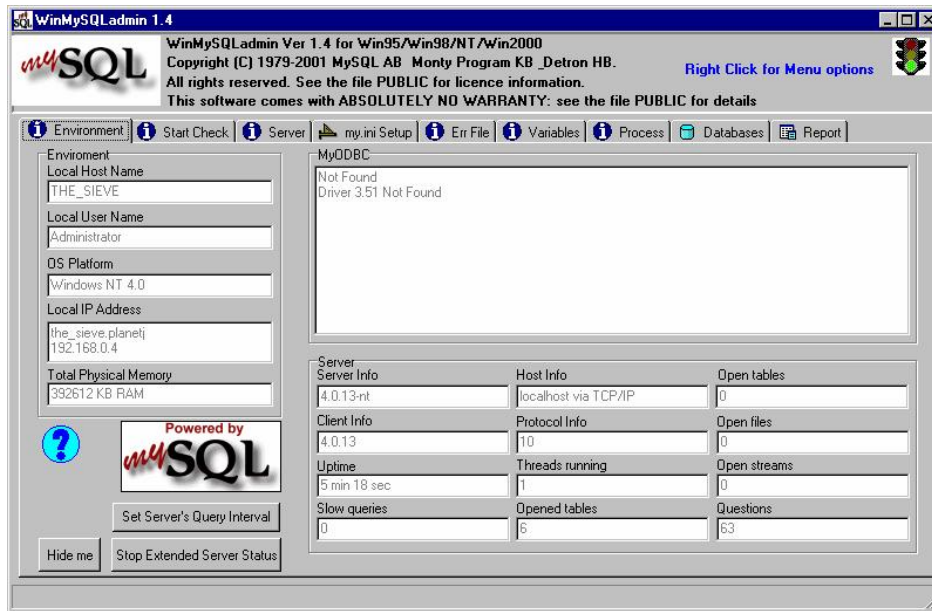


Figure 19 - MySQL WinMySQLAdmin Screen

27. **For MySQL WOW Metadata Users:** You will be prompted to enter an admin user id and password for MySQL. Please do so. This information is stored in the *my.ini* file located in *C:\WINDOWS* or *C:\WINNT*. The screen looks similar to the screen below.



Figure 20 - MySQL WinMySQLAdmin Setup Screen

28. **For MySQL WOW Metadata Users:** After clicking OK to the screen above, you should see a green light lit on the stoplight in your taskbar (taskbar is on the lower right-hand side of your screen). If you do not (a red or yellow light is lit), MySQL was not configured correctly. See the Troubleshooting section or view the MySQL documentation. If all else fails, contact your PlanetJ Corporation customer support representative. Next you will see a dialog confirming the configuration of MySQL. Proceed

by clicking OK only after the configuration of MySQL is complete and you see a green light on the stoplight in the taskbar. The dialog is similar to the one below.



Figure 21 - Dialog ensuring MySQL installation and configuration was successful

29. Next the WOW installation program will try to start Apache Tomcat. You will see a splash screen for Tomcat that will dispose when the service has started. Please see the Troubleshooting section of this guide, or contact your PlanetJ customer support representative if you have any problems.
30. If everything was a success during the WOW installation process, you should see a screen like the one below. Please note there still may be problems with WOW even though you see green checks next to each installation process.

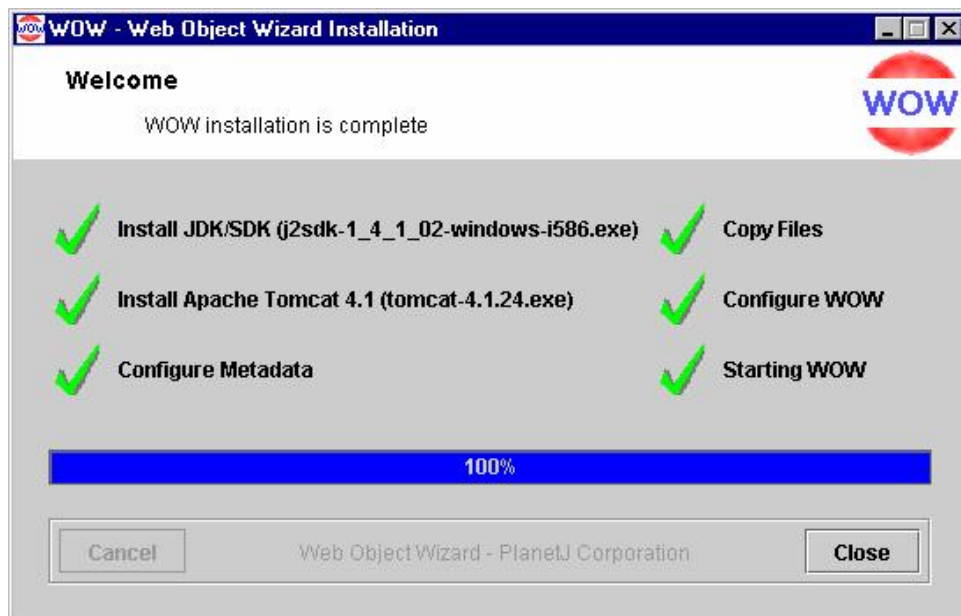


Figure 22 - WOW Installation screen, showing the installation status of each process

31. At the end of the installation you will see a screen similar to the one below:



Figure 23 - Welcome Page

Once your webserver (Apache Tomcat) is started, open a browser and go to the following URL: <http://localhost:8080/wow63/WOWBuilder>. Bookmark this location for future use. (The URL is case sensitive and the port number may vary according to what port you set) If the installation was successful, you will see a sign on screen similar to the one below:



Figure 24 - Initial WOW screen

For more information on using WOW once it is installed refer to the WOW Builder Guide, which is included on the WOW Installation CD in the docs directory. For any further questions, please contact your local PlanetJ customer support representative.

NOTE: After initial installation, WOW will compile all components as they are accessed. This may result in slower performance but will only occur with the first access. If WOW fails to start, reboot your PC, start Tomcat, and reaccess WOW by opening a browser to: *localhost:8080/wow63/WOWBuilder*

STARTING AND RUNNING WOW

If you have questions on starting and running WOW for the first time, read this chapter

Starting WOW

First we need to ensure the webserver (Apache Tomcat) is started. [See Starting Apache Tomcat](#)

During the WOW installation, shortcuts to run WOW were placed in your Start Button Menus and on your Desktop. You can run WOW by clicking on any of these shortcuts. A desktop shortcut will look something like the image below:



Figure 25 - Desktop Shortcuts to WOW

You can find the Start Button Shortcut by clicking the Start Button, then Programs, then Web Object Wizard, then the link to run WOW is called Web Object Wizard X.XX where X.XX is the version of WOW you have installed. It will look like the image below:

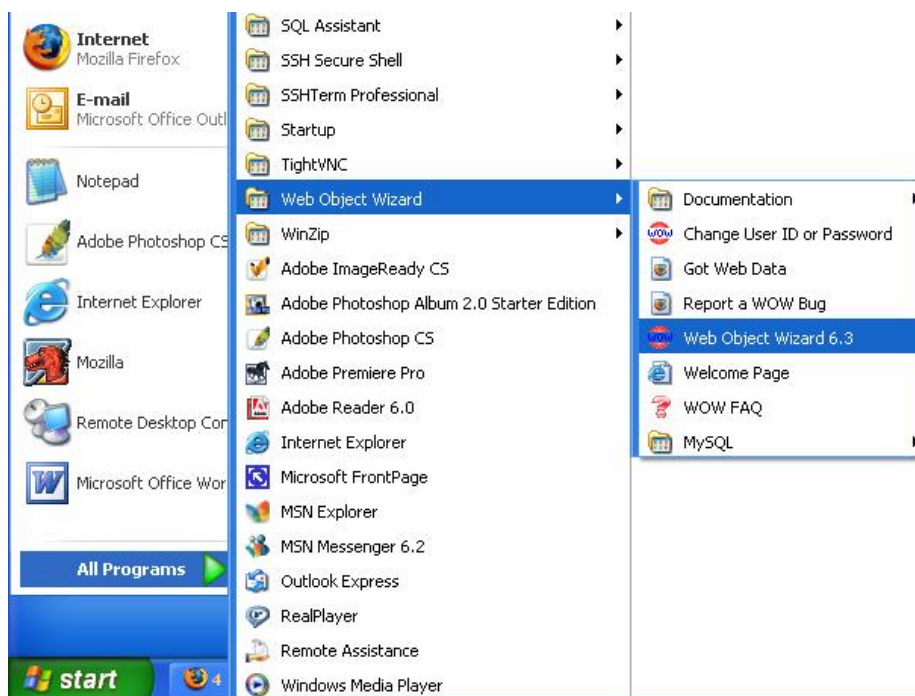


Figure 26 - Start Button Menu Shortcut to WOW

You can also simply bring up a browser window and type in the following URL: <http://localhost:8080/wow63/WOWBuilder>. (The URL is case sensitive and the port number may vary according to what port you set) In the above URL also note that wow63 is dependent on version. For example “wow60” is wow 6.0 while “wow63” is wow 6.3. Check your version by checking for a corresponding folder at: “C:\Program Files\Apache Group\Tomcat 5.0\webapps”. If a wow63 folder exists at this location then your url should include wow63.

If the installation was successful, you will see a sign on screen similar to the one below:



Figure 27 - Initial WOW screen

Creating a connection to AS/400 (iSeries)

The first thing you need to do after signing on to WOW is create a connection. Refer to the WOWBuildersGuide.pdf for detailed instructions. The import properties that are unique to AS/400 (iSeries) is the URL, Driver, User ID, and Password. They must be similar to the following:

URL = jdbc:as400:XXX (Where XXX is your IP Address)

JDBC Driver = AS/400 (iSeries) (com.ibm.as400.access.AS400JDBCdriver)

User ID = WOW

Password = XXX (Where XXX is the password to your WOW user profile)

Connection Spec			
Connection Alias*:	<input type="text" value="YOUR SYSTEM NAME"/>	URL*:	<input type="text" value="jdbc:as400:YOUR IP ADE"/>
JDBC Driver*:	<input type="text" value="AS/400"/>	Properties:	<input type="text"/>
User ID*:	<input type="text" value="WOW"/>	Password*:	<input type="text" value="***"/>

Figure 28 - Connection To AS/400 (iSeries)

Creating a connection to MySQL

The first thing you need to do after signing on to WOW is create a connection. Refer to the WOWBuildersGuide.pdf for detailed instructions. The import properties that are unique to MySQL is the URL, Driver, User ID, and Password. They must be exactly as follows:

URL = jdbc:mysql://localhost/pljsys63

JDBC Driver = MySQL (com.mysql.jdbc.Driver)

User ID = WOW

Password = wow

Connection Spec			
Connection Alias*:	LOCAL_MYSQL	URL*:	mysql://localhost/planetj50
JDBC Driver*:	MySQL	Properties:	
User ID*:	WOW	Password*:	***
Advanced			

Figure 29 - Connection To MySQL

****NOTE**** User ID and Password are case sensitive in MySQL.

If you want to use different properties for User ID and Password, you will have to add records in mysql.user table. Please consult the MySQL User's Manual for details on how to create new user accounts.

Creating a connection to ORACLE

The first thing you need to do after signing on to WOW is create a connection. Refer to the WOWBuildersGuide.pdf for detailed instructions. The import properties that are unique to ORACLE is the URL, Driver, User ID, and Password. They must be exactly as follows:

URL = jdbc:oracle:thin:@localhost:PJSYS63 (Where localhost is your IP address and PJSYS63 is your database)

JDBC Driver = ORACLE (Remote) (oracle.jdbc.driver.OracleDriver)

User ID = Any valid user id.

Password = Any valid password

Connection Spec			
Connection Alias*:	YOUR SYSTEM NAME	URL*:	jdbc:oracle:thin:@localhost:PLA
JDBC Driver*:	ORACLE (Remote)	Properties:	
User ID*:	WOW	Password*:	***

Figure 30 - Connection to ORACLE

Starting MySQL

MySQL is a Database Service on your computer so that all your metadata is stored locally. When Installation of WOW completes MySql should have started up automatically and will display the MySQL Administrator screen, the screen will have a stoplight on it where green means the service has started and is running while yellow usually means it is stopping or shutting down and red means the service is not working or is stopped. Since MySQL is a Windows Service you can start and stop it through windows menus shown below in **Start and Stop a Windows Service**. WOW also has other shortcuts and methods for starting MySql. First go to the

start menu *Start – Programs – Web Object Wizard – MySQL* in the MySQL folder you will see a shortcut named *WinMySQLAdmin* this shortcut will bring up the MySQL Administrator and start the service if it has not already been started. When the Administrator screen has come up or the service has been started.

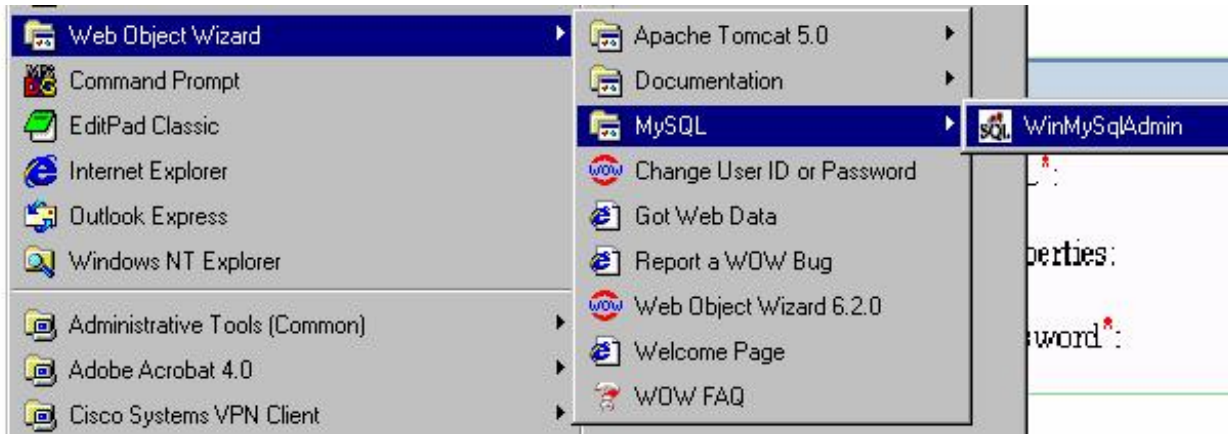


Figure 31 - Starting WinMySQLAdmin

There will be a Stoplight with a green light in your start menu notifications menu in the lower right hand corner of the screen. (shown below) Also shown below is the MySQL Administration Screen which comes up when you start a MySQL service and when you right click on the stoplight in right corner and select the show me option.



Figure 32 - WinMySQLAdmin

Also you can start, stop and view administrator by right clicking on the stop light and selecting these respective options.

Starting Apache Tomcat

Similar to the MySQL the Apache Tomcat Server is a Windows service and can be controlled through windows dialog boxes and command prompt See **Start & Stop a Windows Service**. When Apache Tomcat has been installed on your machine the majority of the time it will start up for you and be running in the background. You can check if the service has started by following the steps shown in the next section **Start & Stop a Windows Service** or you can use the shortcuts that Tomcat has provided for your convenience. To access these shortcuts for the Apache Tomcat Server options you go to the start menu *Start – Programs – Apache Tomcat*. Inside the Apache Tomcat 5.0(or current version) folder listed in the WOW folder there are many links to control the Server. (shown below)

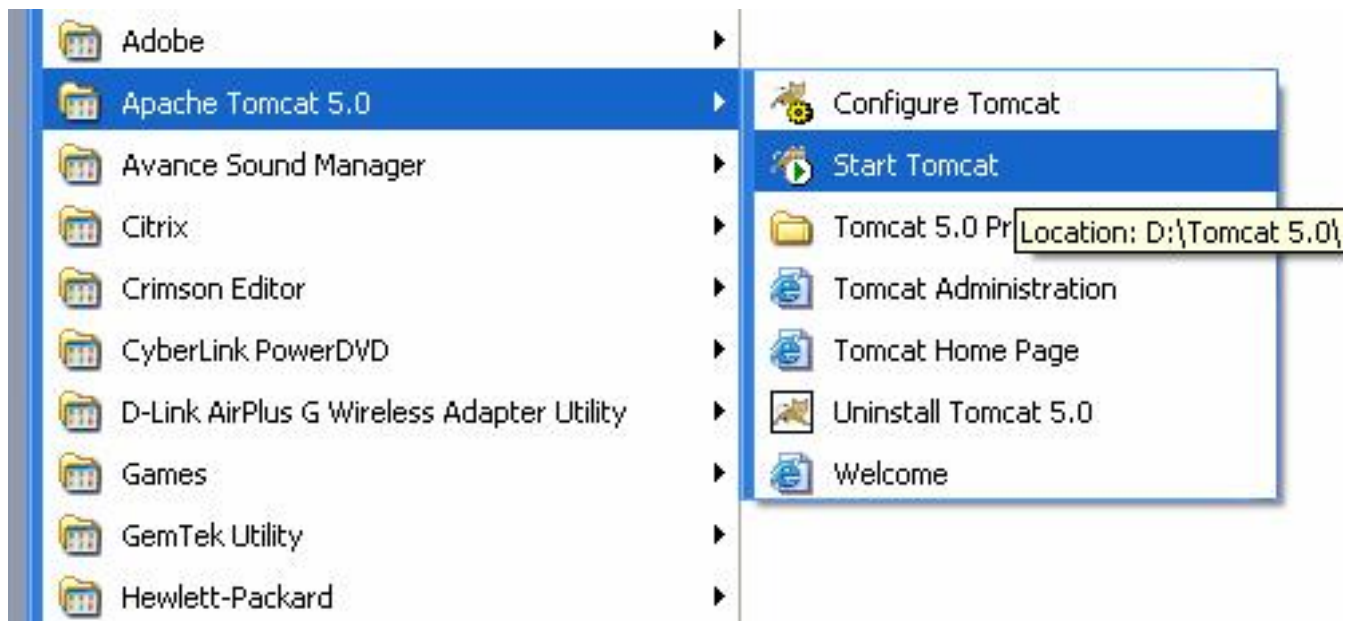


Figure 33 - Start Tomcat

As shown above the links allow you to start, stop, view documentation, Uninstall, visit Home Page, show program directory screen and view administration screen for the server Apache Tomcat. After signing into the Administration Screen you will see the page below to view the options and change settings. You will see a green triangle on the bottom of your screen if Tomcat is running.

At this point, you have successfully installed WOW and may begin to use it. For instructions on how to use WOW, refer the following website:

http://www.planetjavainc.com/learn_wow.html

PlanetJ offers education and technical consulting services as well. Contact info@planetjavainc.com more information.

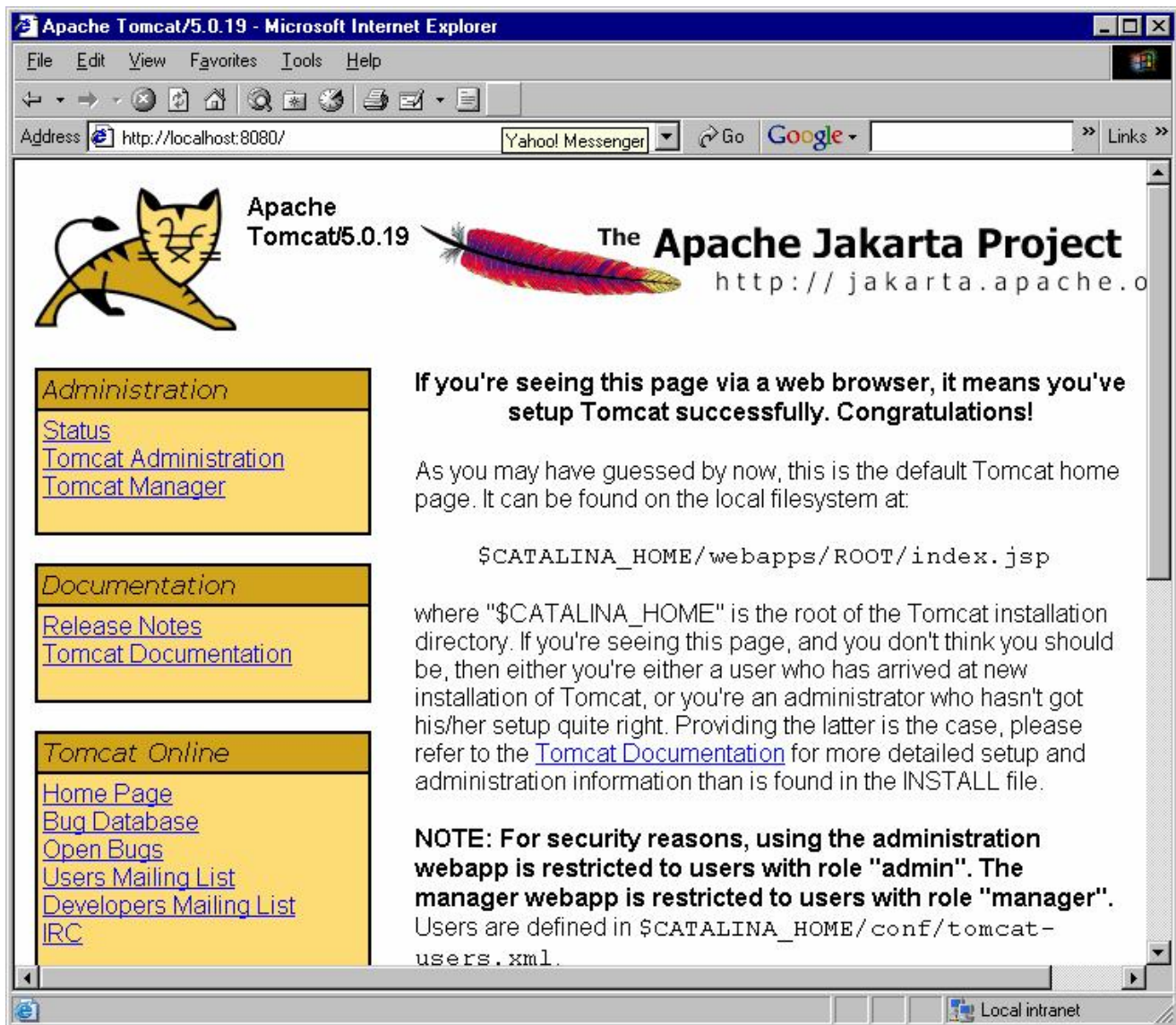


Figure 34 - Tomcat Page

MOVING WOW TO ANOTHER SERVER

Refer to this if you have already installed WOW and want to run WOW on a different server.

Moving WOW to another Server:

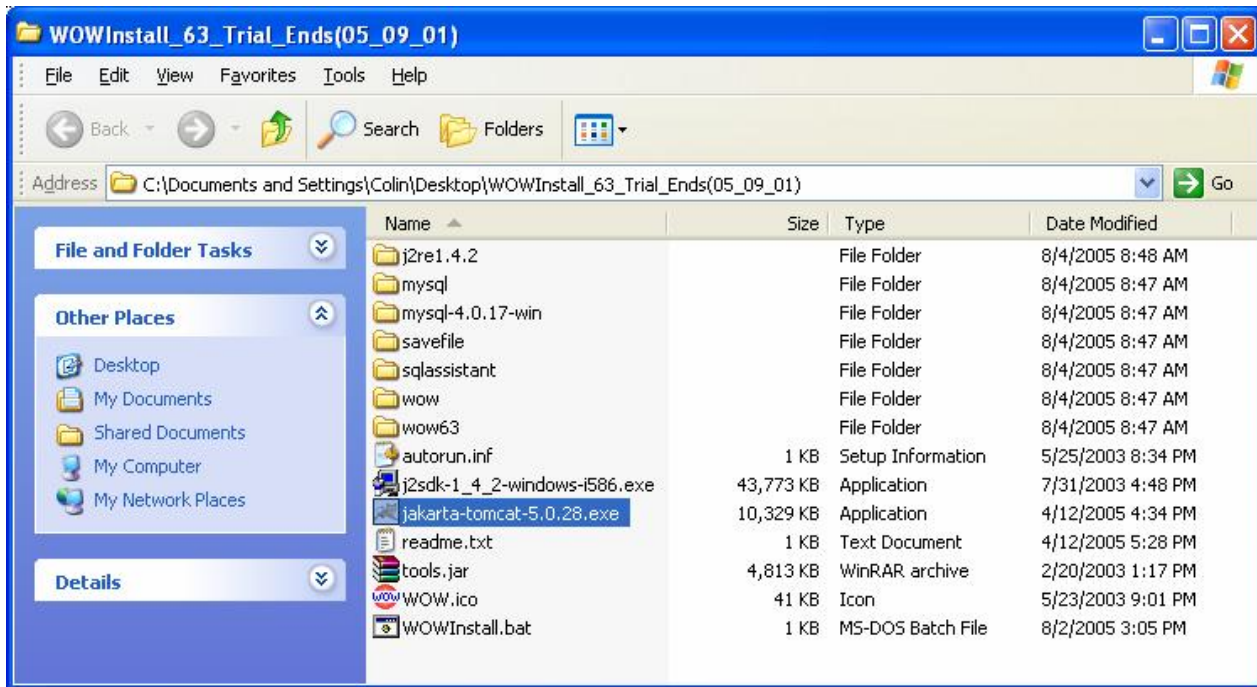
Various reasons including disaster recovery, machine upgrades, or scaling requirements may require you to move WOW to another server. In this section step by step instructions will be given to move an existing WOW installation to another machine.

NOTE: You must have a valid WOW license for each production server. Contact PlanetJ at support@planetjavainc.com to confirm that your licenses are valid.

NOTE: You must also have the Java JDK installed on the new machine. If already installed ignore this note. Otherwise this can be found in the WOW installation folder (j2sdk-1_4_2-windows-i586.exe) or www.java.sun.com.

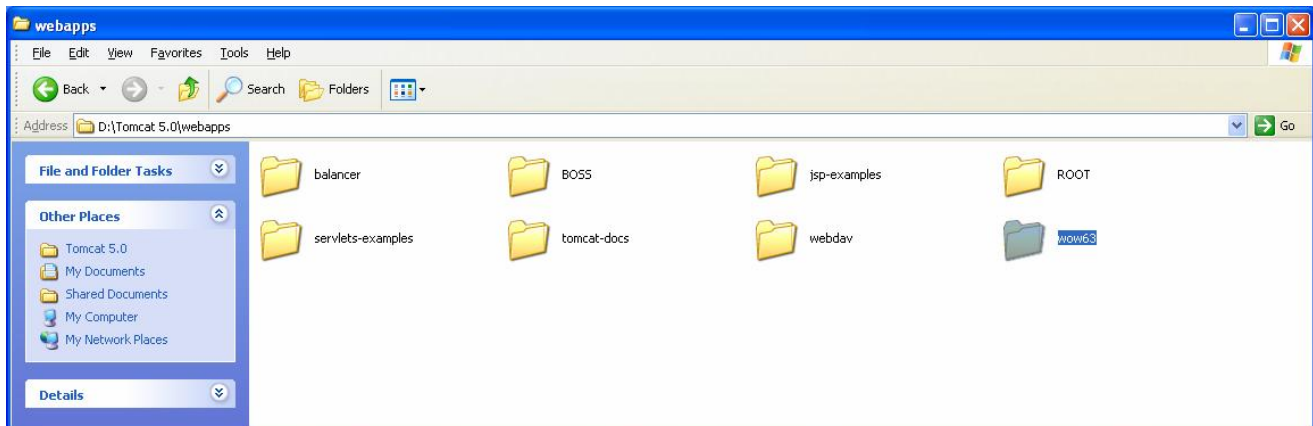
Step 1- Installing a new Application Server

First you need to install the new application server such as Apache Tomcat or Websphere onto your new machine. In this example we use Apache Tomcat. The Tomcat Installation can be found in your WOW installation folder located in your CD or download folder. Double click on the executable (Jakarta-tomcat-5.0.28.exe) and step through the installation.



Step 2 – Copy and Deploy Current WOW Application Context(s)

Next get the current WOW context(s) located on the machine and application server that you want to move WOW from. In the application server's webapps folder copy the WOWXX(XX is your current WOW version number) and paste it into your new application server's webapps folder. Do this for each context that you want to backup or move to the new system.

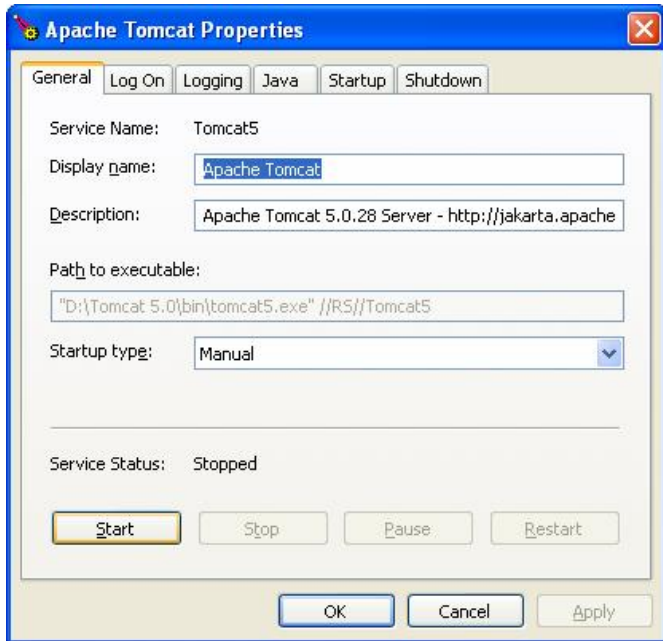


Step 3 - Optimize Application Server (Tomcat)

After copying all contexts (WOW Applications) onto your new system, you should decide whether this new system will be a production system. If yes, it is recommended that you suggest optimizing your Application Server to run WOW applications faster and more efficiently. For more information about optimizing Tomcat, see our [Optimizing Tomcat](#) document on the PlanetJ website.

Step 4 - Restart Application Server and Test

Once all changes have been made and the WOW context(s) have been copied, restart the Application Server on the new system and run WOW.



Restarting Tomcat



WOW (Web Object Wizard)

If any problems moving WOW from one system to another please contact [PlanetJ](#).

TROUBLESHOOTING

Refer to this chapter if any piece of the WOW installation fails.

Troubleshooting Apache Tomcat

Apache Tomcat Problem #1: You see the following Error message:

```
*****
```

Unable to compile class for JSP

An error occurred at line: -1 in the jsp file: null

Generated servlet error:

```
[javac] Since fork is true, ignoring compiler setting.
```

```
[javac] Compiling 1 source file
```

```
[javac] Since fork is true, ignoring compiler setting.
```

```
*****
```

Apache Tomcat Solution #1: Stop and Start Apache Tomcat. [See Starting Apache Tomcat.](#) Make sure there are no Errors when Tomcat starts, then start WOW again. [See Starting WOW](#)

Apache Tomcat Problem #2

WOW assumes by default to run with JDK 1.4. If you have JDK 1.5 installed and configured and used by Tomcat, you may need to update the tools.jar file located in:

```
C:\Program Files\Apache Group\Tomcat 5.0\common\lib
```

To do this, find the tools.jar file in your JDK1.5 installation directory and copy it to the tomcat directory listed above. Tools.jar is a set of tools to enable WOW to compile JSPs and must be in the applications server's classpath.

AS400 MetaData

WOW installation will restore 2 libraries to your iSeries. The user profile under which WOW runs must have authority to all the files in these 2 libraries. If WOW does not correctly start (You may see a white screen), verify you have authority to these files by typing the following at an AS400 command line:

RUNQRY () PJSYS63/SQLOPS

If you don't have authority, request that your system administrator provide authority to them by running the following commands:

```
GRTOBJAUT OBJ(PJSYS63/*ALL) OBJTYPE(*ALL) USER(WOW)
GRTOBJAUT OBJ(PJUSER63/*ALL) OBJTYPE(*ALL) USER(WOW)
```

Adjust the USER to be the user profile that you installed WOW under. After granting authority, you will need to restart your application server.

Troubleshooting MySQL

MySQL Problem #1: If the MySQL WinMySQLAdmin shows a red light instead of a green light, here is what you should try the following:

MySQL Solution #1:

1. Close MySQLAdmin so you no longer see the stoplights in your taskbar.
2. Delete the my.ini file. It is located in C:\WINDOWS or C:\WINNT. This is the MySQL configuration file.
3. Start WinMySQLAdmin. See the section on Starting MySQL for details

Troubleshooting WOW

Please contact your PlanetJ WOW representative.