

Installing and Configuring WebSphere Express with WOW

TOMCAT * ISERIES * MYSQL

WebSphere Express Installation and Setup Guide

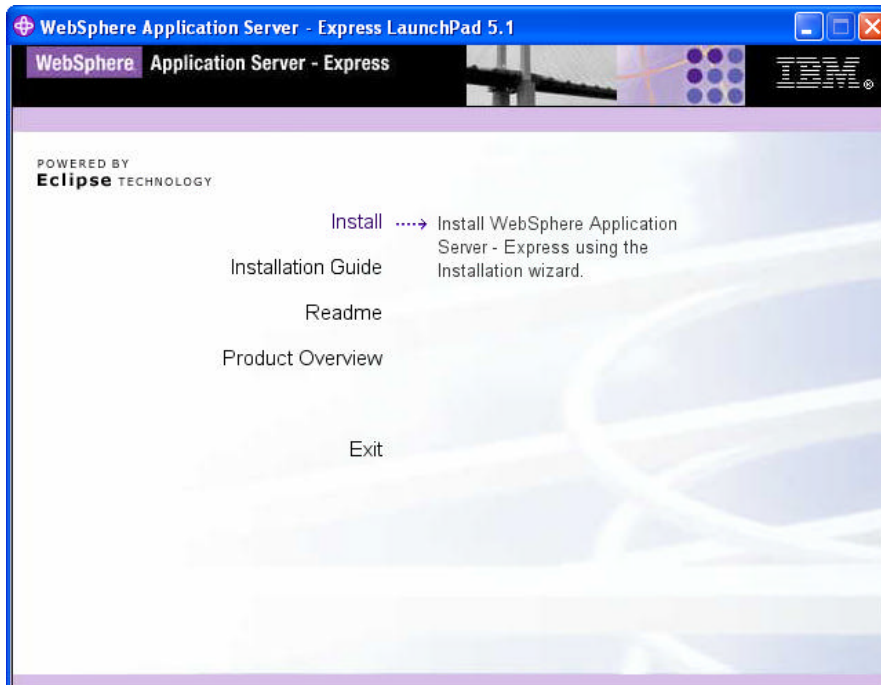
© PlanetJ Corporation
1821 Kelson Place, Escondido CA 92029
Phone 760-432-0600 • Fax 760-432-0600

Table of Contents

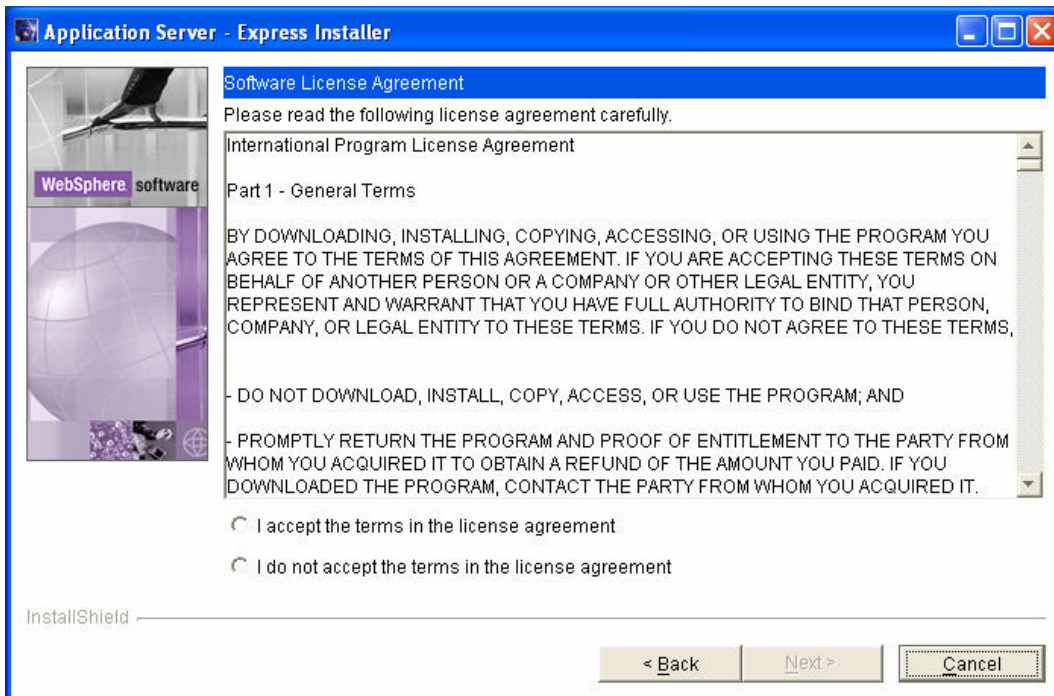
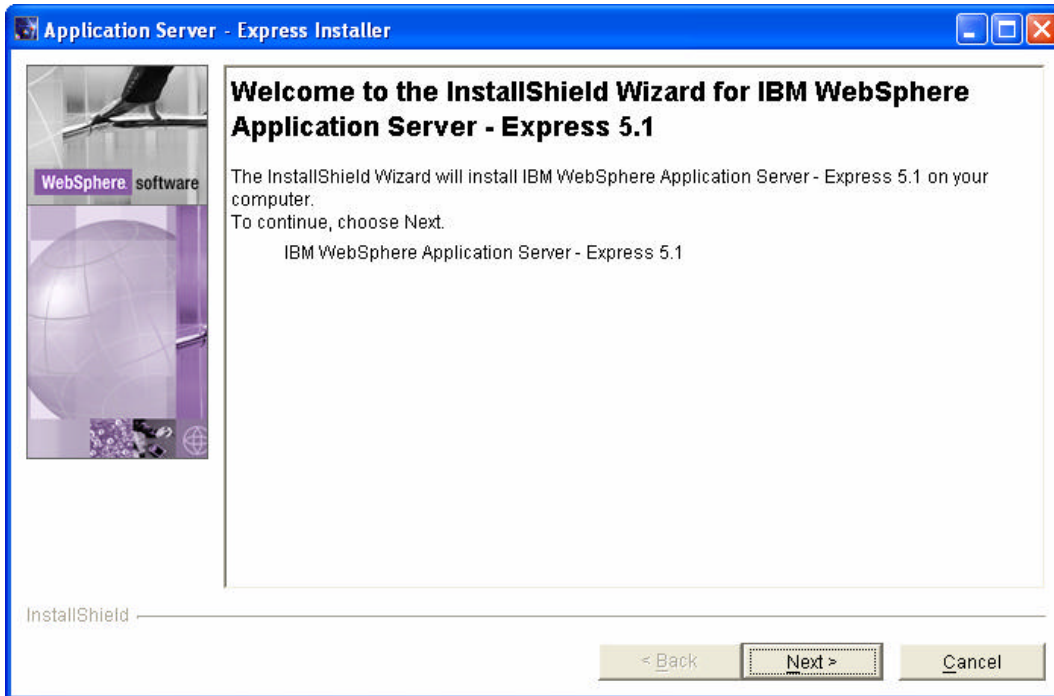
Install WebSphere Express	3
Start WebSphere Express Application Server	7
Required Steps to Run WOW	15
Changing web.xml to connect to new metadata server	18
Restoring the Metadata Libraries Manually	20
Stop IIS Admin Service if port 80 not working	22

Install WebSphere Express

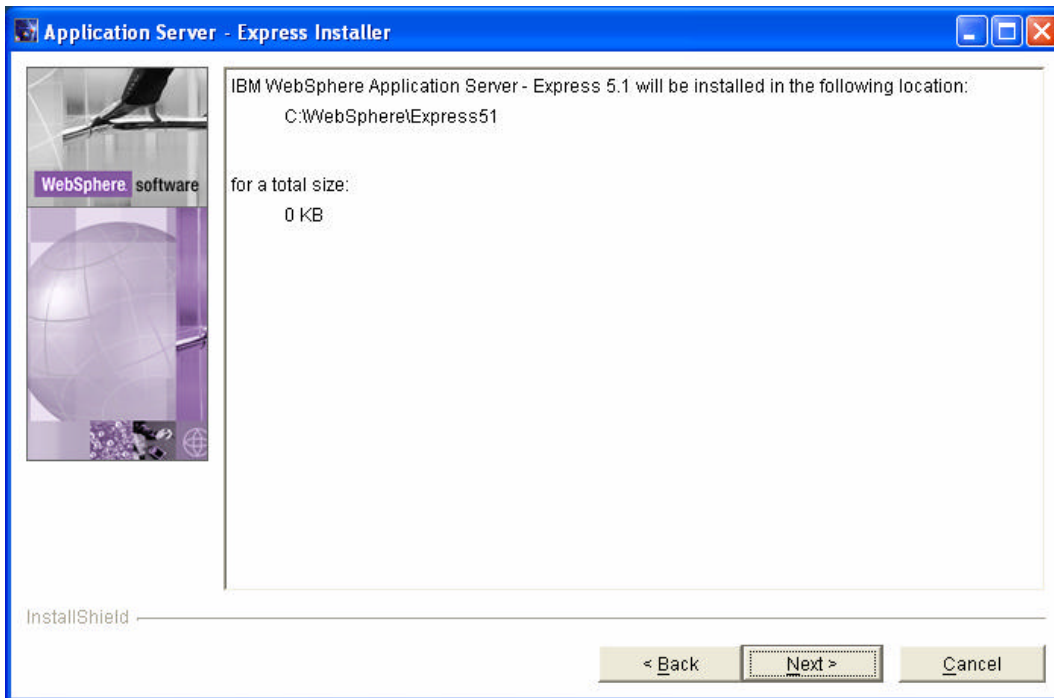
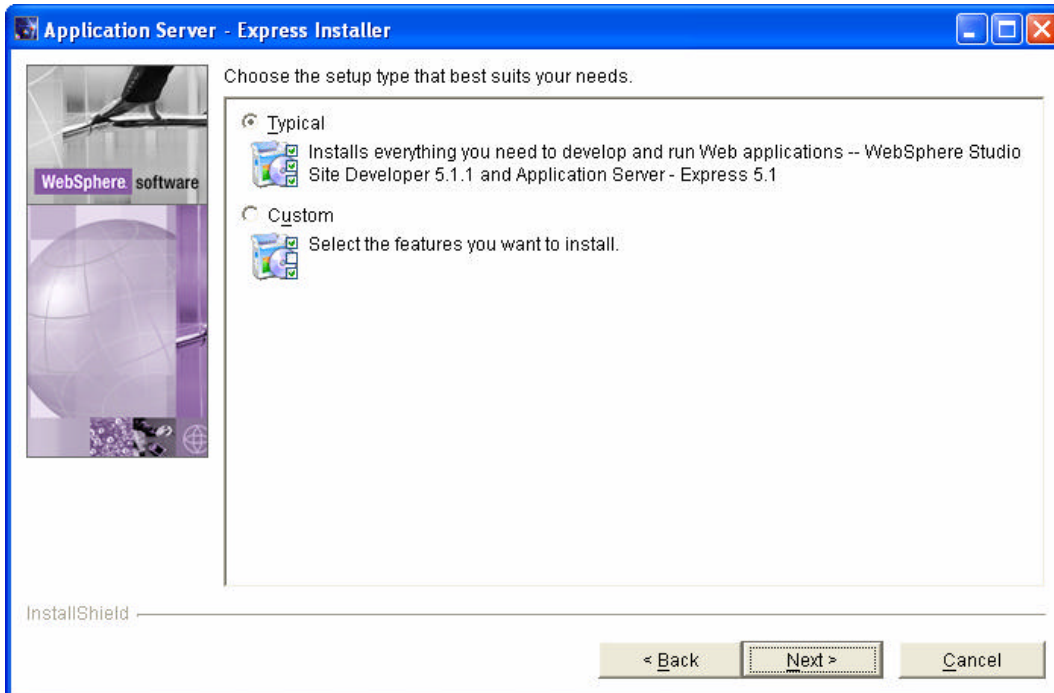
To install WebSphere Express first either run the setup.exe file or insert the WebSphere Express Disk which will bring up the WebSphere Express Option Screen we want to click on the Install option.



After selecting the Install Option you will go through several dialog screens clicking next when the information is correct or has been supplied. The first screen is just the welcome screen shown below. The License Agreement is next so after reading and agreeing then click next.

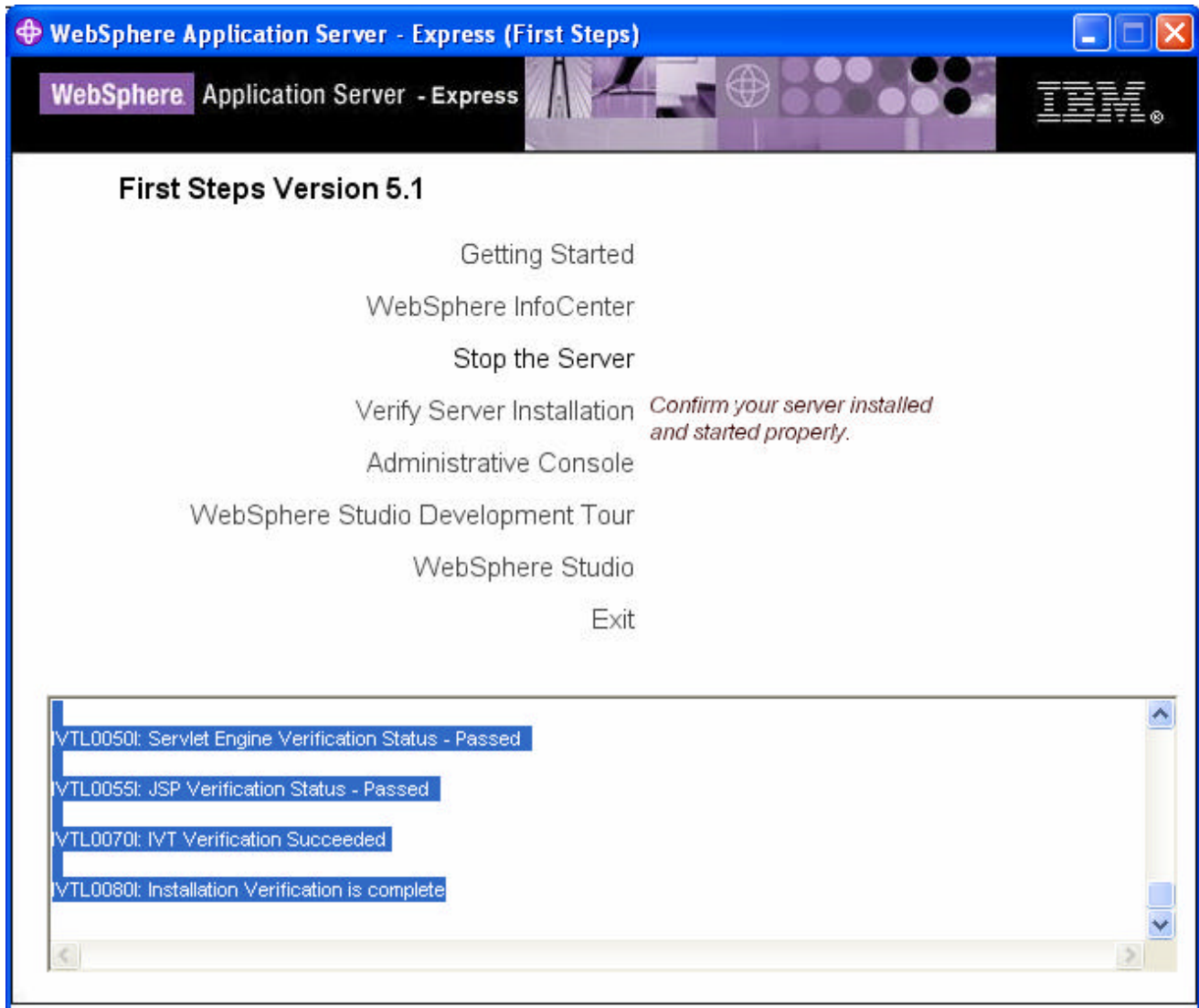


The next screen has two installation type options typical and custom, most of the time you will do typical but if there certain language packs or you want to leave out features then select custom. Next screen will tell where WebSphere Express is going to be installed on the System and click next to install.



After the installation a First Steps option screen will come up as shown below. The *Getting Started* link will bring up a WebSphere Express starter guide. The *InfoCenter* link takes you to IBM's Website for more advanced issues and information regarding WebSphere Express. *Start the Server* and *Verify Server Installation* is self-explanatory, we want to verify the server installation first and then setup the server to add WOW as an application. Click on

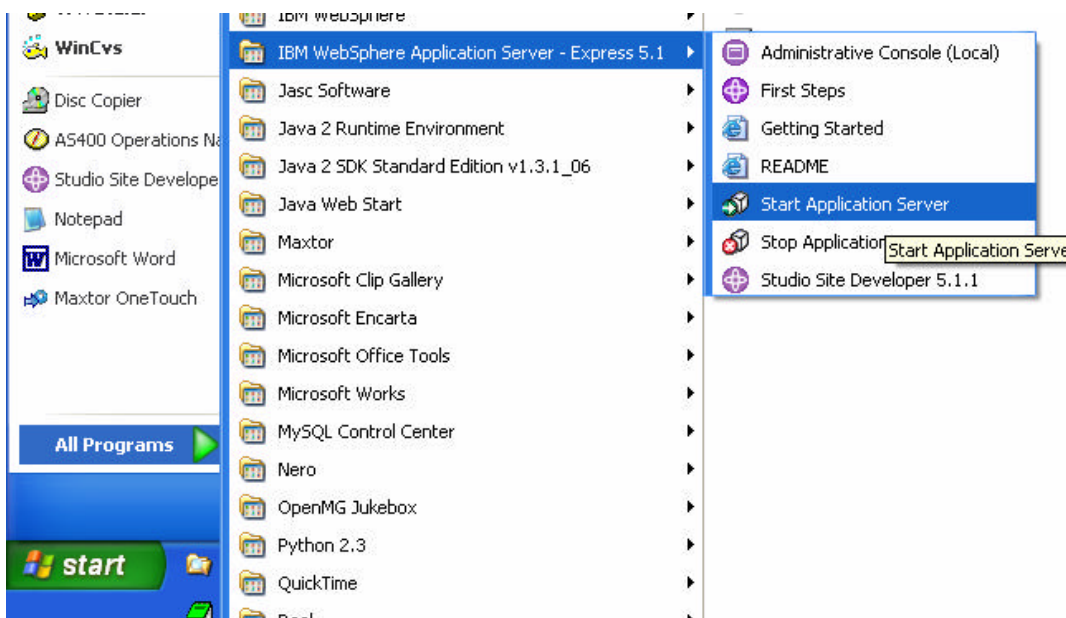
Server Installation, which will start a testing process shown in the text area below the options. After a few minutes it will notify you whether or not the server can be verified and if it is correct then it will start the server. Now we are done with the WebSphere Express installation and will explain how to setup WOW to run on the newly installed server.



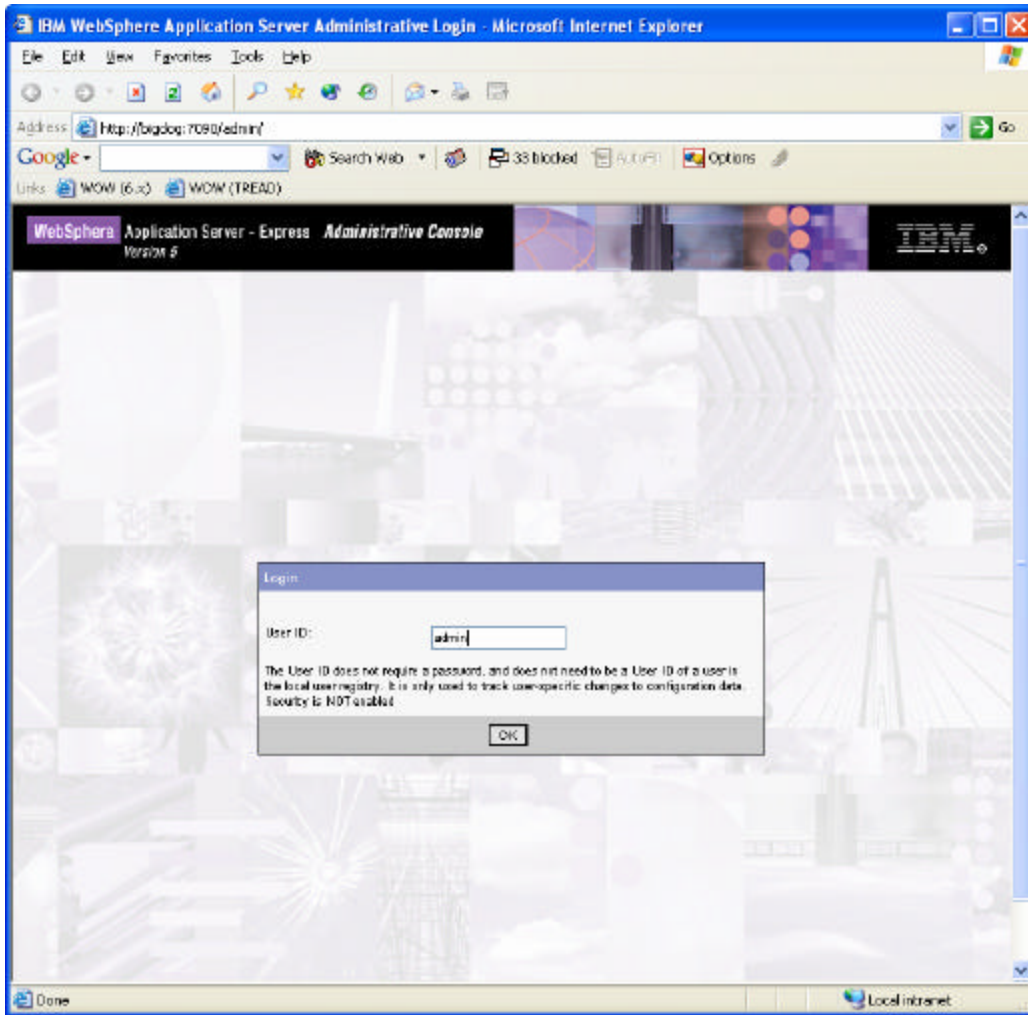
You need to have a WAR given by PlanetJ to finish installing WOW to WebSphere Express Application Server.

Start WebSphere Express Application Server

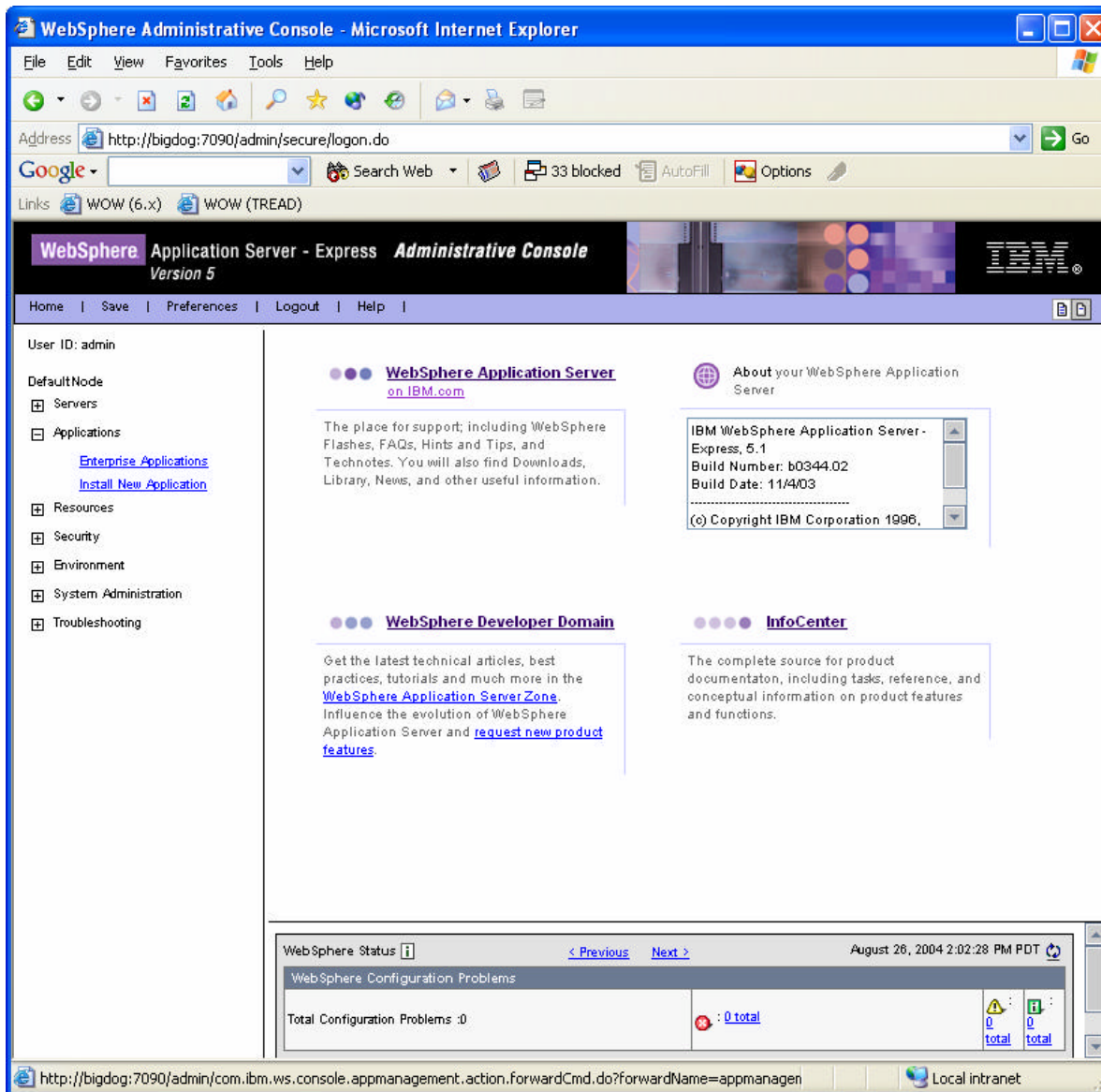
We need to start the WebSphere Application Server before we can install WOW to that server. To Start, Stop and manage the Application Server you need to go through to the Start menu, *Start-Programs-IBM WebSphere Application Server*. Shown Below



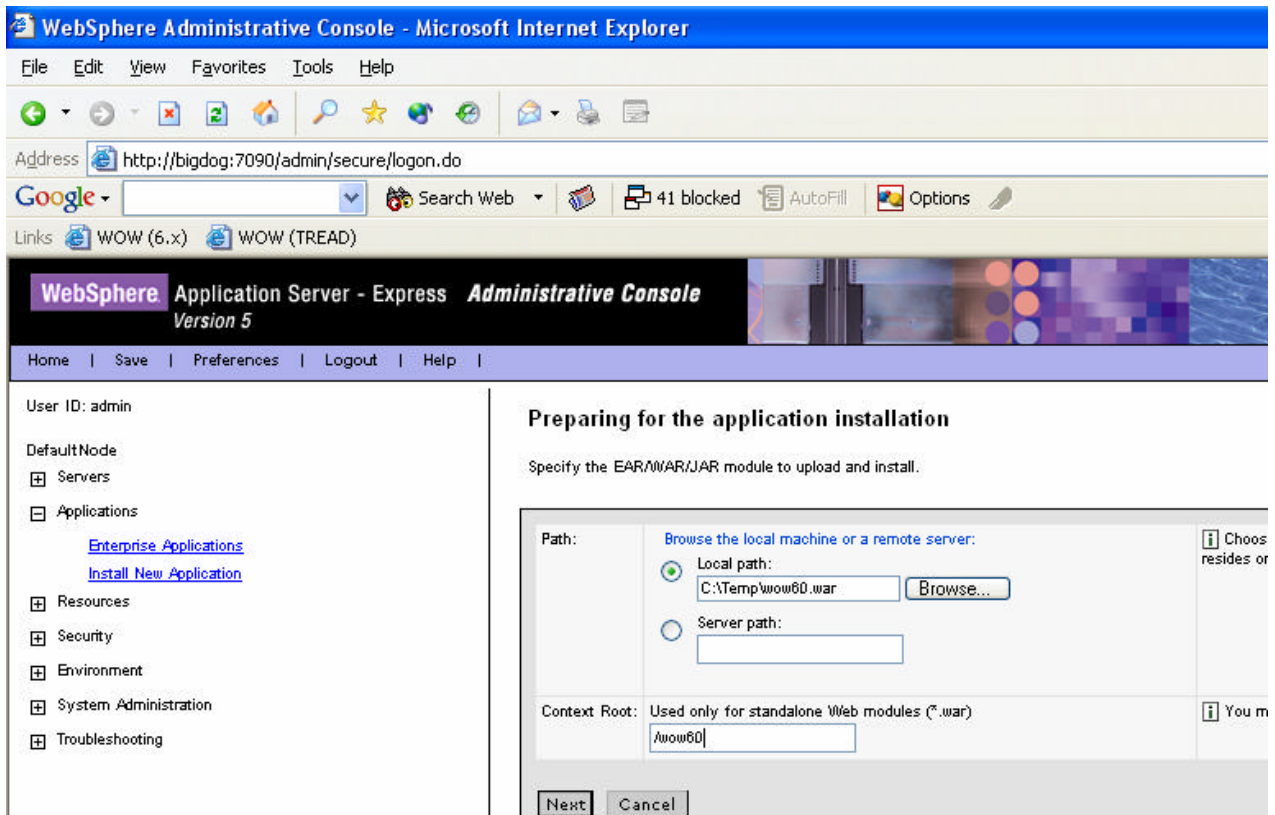
After starting Application Serve we want to go to the Administration Console, which is where everything regarding the application can be controlled. It initially comes up with a sign-on screen with no password necessary enter any admin login you would like to use and proceed to main screen.



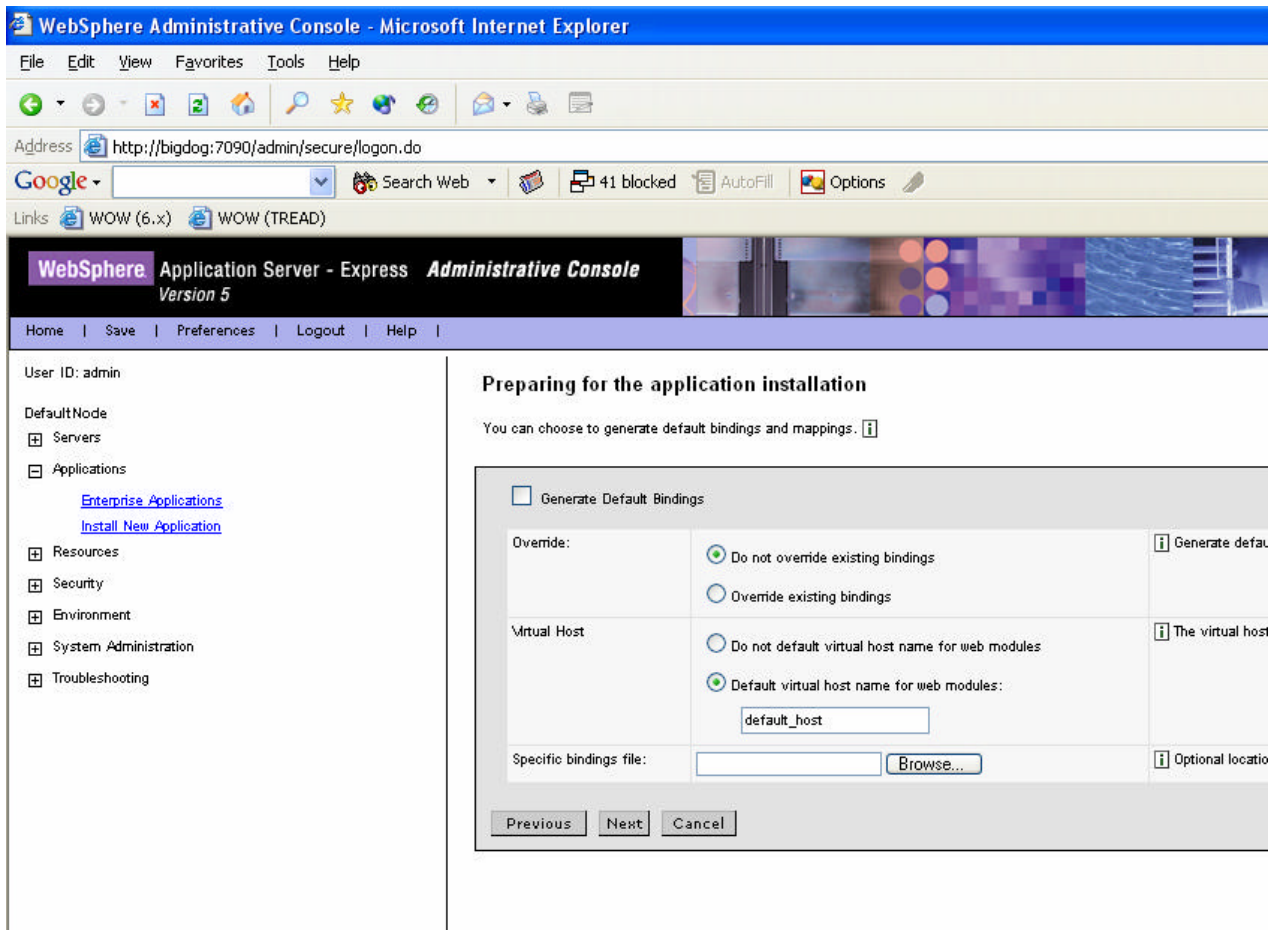
We can now install WOW as application to run on Websphere Express by selecting the Applications option on the left side and selecting the ***Install New Application*** that will bring up screen to install a web application using either an ear or war file. PlanetJ should have provided a war file that can be loaded into the server by specifying the path where this file is on your computer.



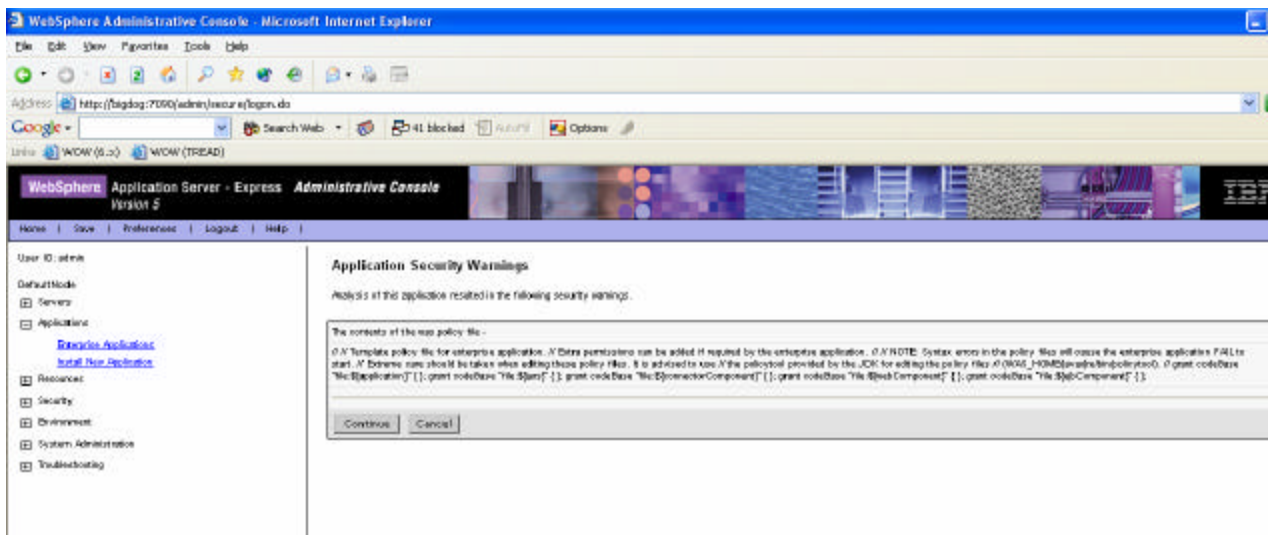
After you have clicked on the Install New Application the screen below is loaded which is where you can open up your war or ear file. Also if you are using a war file you need to state the context root which is found in the web.xml file inside of the war or is what you would use to run the file such as “/WowBuilder”



After you have selected the war or ear file and specified the context root then click next which will take you to the next screen, which is where we prepare for the installation by selecting binding and virtual host options. Bindings and the Virtual Host options can almost always be left as default and for more info on both options Websphere Express has an info section to the right which will explain them in detail.



Most of the options when installing we will keep default and just click next. The Application Security Warnings screen displays the warning associated with application we can just click continue and proceed to Step 1 of installation.



Step 1 of the installation allows you set numerous options such as the application name, class reloading, distributing application and few more. With the case of WOW only a few of these options are relevant: Application Name can be changed to better reflect the application that is being installed. For example wow60_war changed to just WOW60. The only other option that can be altered is the Enable Class Reloading option and the preceding reload interval time. If you are installing Websphere Express with WOW for development then class reloading is a good thing to have with a short time in between reloads of class files. If it is not being used for development and speed and processing power is important then do not select class reloading.

Install New Application
Allows installation of Enterprise Applications and Module

→ Step 1 : Provide options to perform the installation

Specify the various options available to prepare and install your application.

AppDeployment Options	Enable
Pre-compile JSP	<input type="checkbox"/>
Directory to Install Application	<input type="text"/>
Distribute Application	<input checked="" type="checkbox"/>
Use Binary Configuration	<input type="checkbox"/>
Deploy EJBs	<input type="checkbox"/>
Application Name	<input type="text" value="wow60_war"/>
Create MBeans for Resources	<input checked="" type="checkbox"/>
Enable Class Reloading	<input type="checkbox"/>
Reload Interval in Seconds	<input type="text" value="0"/>
Deploy WebServices	<input type="checkbox"/>

Next Cancel

[Step 2](#) Map virtual hosts for web modules
[Step 3](#) Map modules to application servers

In Step 2 and Step 3 Shown below you will not need to change anything for the installation of WOW and can just use the default values. In Step 2 you would specify the Web Modules and Step 3 you would assign those modules to a Web Application, but in most cases we will just click next on both steps.

WebSphere Administrative Console - Microsoft Internet Explorer

File Edit View Favorites Tools Help

Address http://bigdog:7090/admin/secure/logon.do

Google Search Web 41 blocked AutoFill Options

Links WOW (6.x) WOW (TREAD)

WebSphere Application Server - Express *Administrative Console*
Version 5

Home | Save | Preferences | Logout | Help |

User ID: admin

DefaultNode

- Servers
- Applications
 - Enterprise Applications
 - Install New Application
- Resources
- Security
- Environment
- System Administration
- Troubleshooting

Install New Application

Allows installation of Enterprise Applications and Module

[Step 1](#) Provide options to perform the installation

→ [Step 2](#) : Map virtual hosts for web modules

Specify the virtual host where you want to install the Web modules contained in your application. Web modules can

Apply Multiple Mappings

Web Module	Virtual Host
<input type="checkbox"/> WDW 6	default_host

Previous Next Cancel

[Step 3](#) Map modules to application servers

[Step 4](#) Summary

WebSphere Administrative Console - Microsoft Internet Explorer

File Edit View Favorites Tools Help

Address http://bigdog:7090/admin/secure/logon.do

Google Search Web 41 blocked AutoFill Options

Links WOW (6.x) WOW (TREAD)

WebSphere Application Server - Express *Administrative Console*
Version 5

Home | Save | Preferences | Logout | Help |

User ID: admin

DefaultNode

- Servers
- Applications
 - Enterprise Applications
 - Install New Application
- Resources
- Security
- Environment
- System Administration
- Troubleshooting

Install New Application

Allows installation of Enterprise Applications and Module

[Step 1](#) Provide options to perform the installation

[Step 2](#) Map virtual hosts for web modules

→ [Step 3](#) : Map modules to application servers

Specify the application server where you want to install modules contained in your application. Modules can be installed on the same server or dispersed among several servers.

Clusters and Servers:

WebSphere.scp1=DefaultNode,node=DefaultNode,server=server1

Apply

Module	URI	Server
<input type="checkbox"/> WDW 6	wsdl:use:WEB-INF/web.xml	WebSphere.scp1=DefaultNode,node=DefaultNode,server=server1

Previous Next Cancel

[Step 4](#) Summary

After all of the steps the final step is a summary screen of all the options selected you will need to look over the values make sure they are correct and then click finish to finish the installation of WOW to WebSphere Express.

Install New Application

Allows installation of Enterprise Applications and Module

[Step 1](#) Provide options to perform the installation

[Step 2](#) Map virtual hosts for web modules

[Step 3](#) Map modules to application servers

→ Step 4 : Summary

Summary of Install Options

Options	Values
Distribute Application	Yes
Use Binary Configuration	No
Cell/Node/Server	Click here
Enable Class Reloading	No
Create MBeans for Resources	Yes
Deploy EJBs	No
Reload Interval in Seconds	0
Application Name:	wow6
Directory to Install Application	
Pre-compile JSP	No
Application Name	wow6
Deploy Web Services	No

Previous

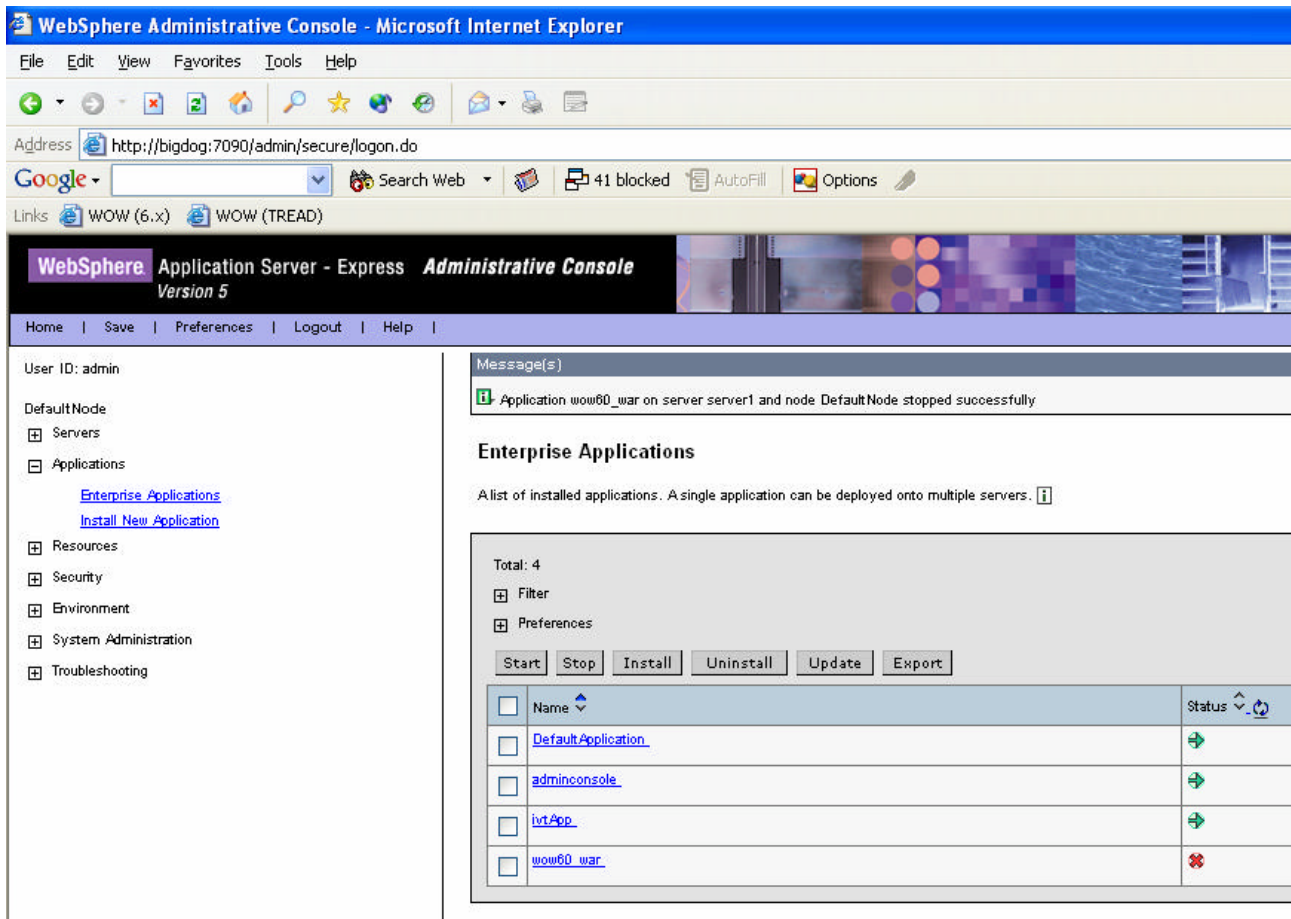
Finish

Cancel

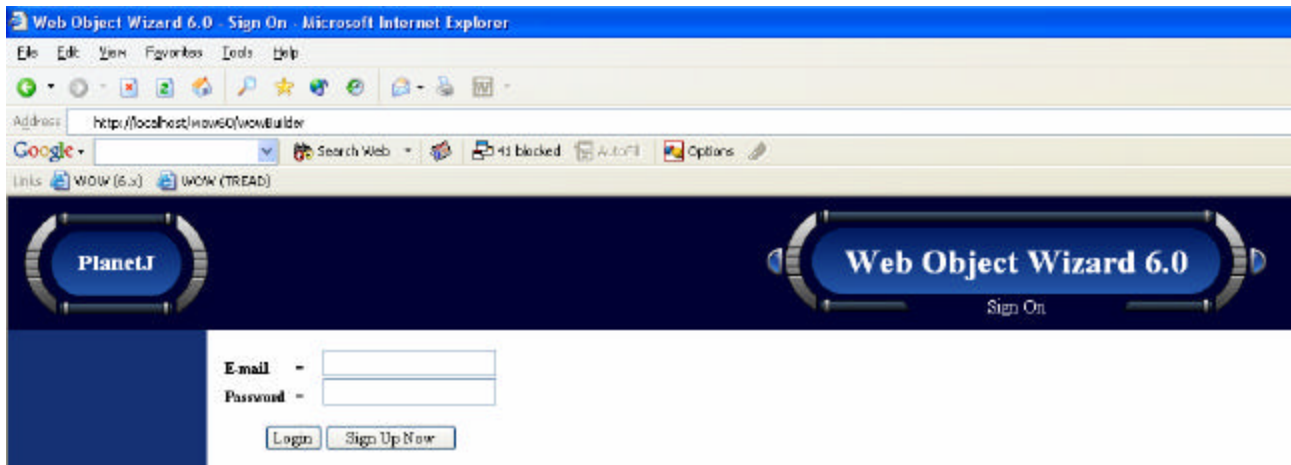
This chapter describes the process to run WOW with the WebSphere Express Application Server running in background..

Required Steps to Run WOW

To Run WOW we need to make sure that the WebSphere Express Application Server is running with WOW running as one of its applications. First we need to start the Application Server and then open up the administration console shown in chapter 2. Inside of the administration console we want to select the applications drop down and then select Enterprise Applications. Shown Below is the Enterprise Applications Screen, which shows all of the applications that have been installed to the Web Application Server. If WOW is not there after you have installed then you need to go back and walkthrough chapter 2 again. If it is there then you want to check to see that the application is started by looking at the status column. If there is a red X then you need to start the application by clicking on the WOW application and selecting the start button.



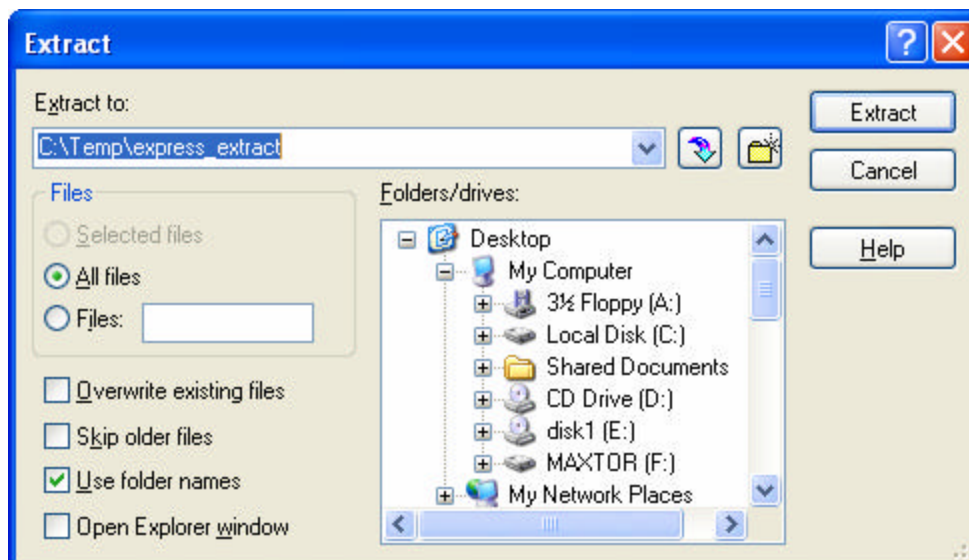
If it is already a green arrow then we can run WOW by opening up a web browser and typing the URL for the application. The URL is going to be <http://localhost/wow60/WowBuilder>, which will give you the beginning WOW screen shown below. By checking in the Administrative Console you can also run WOW off of different ports such as <http://localhost:7080/wow60/WowBuilder>.



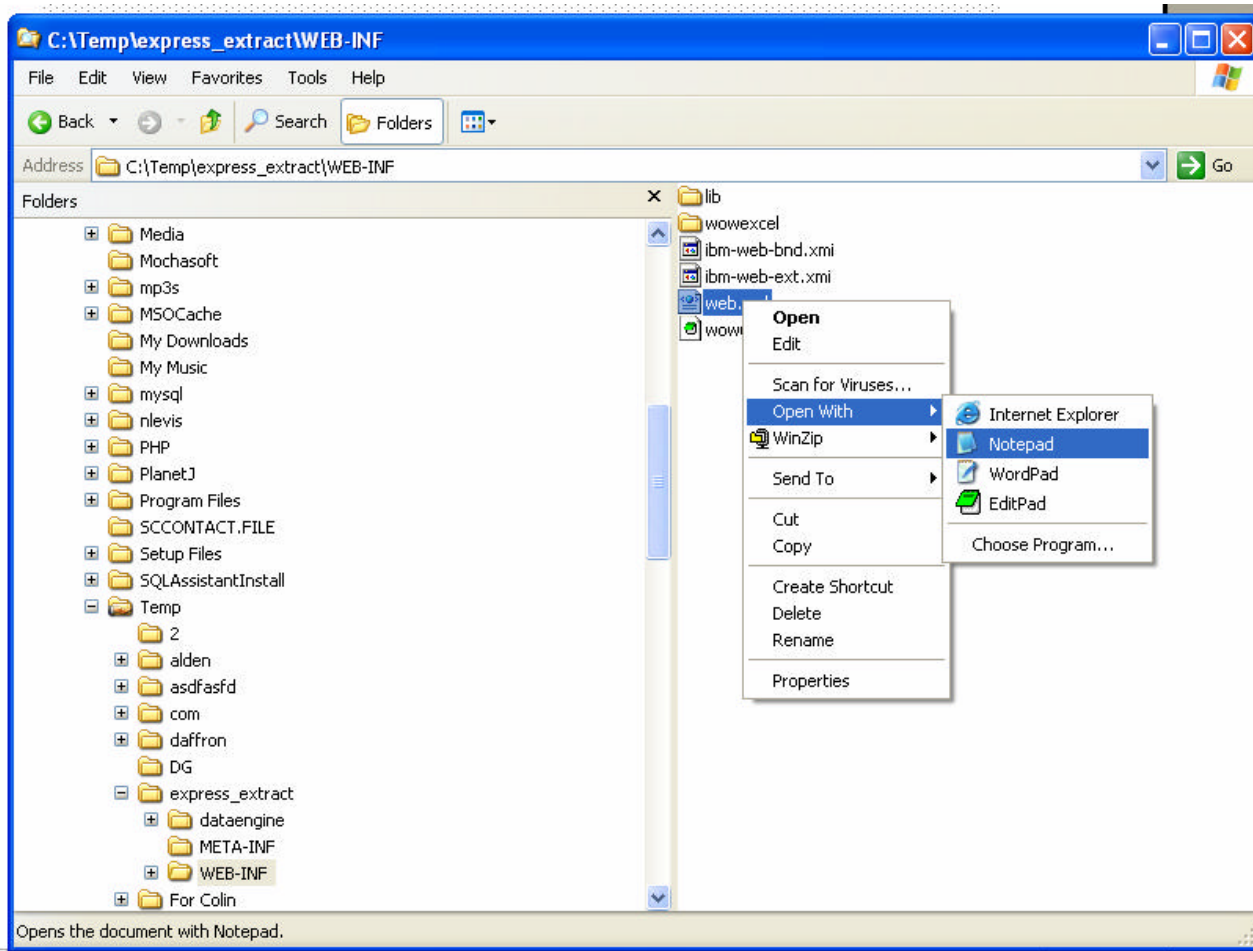
When installing WOW on Websphere Express you may need to change the web.xml to connect to a new server before installing.

Changing web.xml to connect to new metadata server

If you are installing WOW on a different metadata server than the normal one shipped with the war we need to change the web.xml so that WOW will connect to the metadata server. If the metadata libraries have never been previously installed on your metadata system then follow the steps shown in next section on restoring metadata libraries manually. After this has been done we need to find out where the war file is that we are going to install. You first need to unzip the war file using WinZip or some other zip utility that can work with war files.



Unzip the war file to a folder that you designate and then open the web.xml as shown below using some type of text editor.



In the web.xml file shown below we want to change three initial parameters the PJ_SYSTEM_URL, PJ_USER_ID and PJ_PASSWORD. We need to change the PJ_SYSTEM_URL to the IP of your ISeries or other metadata server and change PJ_UERD_ID and PJ_PASSWORD to the sign-on user name and password for that system. Save the web.xml, Zip the original war's files again and rename the wow60.zip to a wow60.war and go through the steps in Chapter 2 to install it.

1. The CRTSAVF command is used to create a savefile. The new savefiles should be named PJSYS60 and PJUSER60. Make sure to remember the library in which the savefiles were created (eg. CRTSAVF FILE(QGPL/PJSYS60)). Be sure to create both savefiles

```

Create Save File (CRTSAVF)

Type choices, press Enter.

Save file . . . . . > PJSYS60      Name
Library . . . . . > QGPL          Name,
Text 'description' . . . . . > 'WOW Metadata'

```

Figure 1 Creating a savefile on the iSeries

2. From the PC, connect to the iSeries using File Transfer Protocol or FTP. (Ex. From a dos command line: [ftp 10.10.10.12](ftp://10.10.10.12) where 10.10.10.12 is the IP address of your iSeries) You may use the WOW userid and password to connect. (The complete FTP session is displayed below.)
3. Once connected to the iSeries use the ftp “cd” command to change the current iSeries library to the library containing the newly created savefiles. (Ex. “cd QGPL”)
4. Change the local directory to the location where the savefiles are located. (Ex. “lcd d:\savefile”) where d:\ is your local CD ROM drive where the WOW Install CD is located.
5. Change the FTP transfer type to binary by typing “bin”
6. Transfer the supplied savefiles to the iSeries by using the PUT command. (Ex. “put pjsys60”) Make sure you transfer both savefiles.

```

C:\>ftp cybra7
Connected to cybra7.
220-QTCP at CYBRA7.
220 Connection will close if idle more than 5 minutes.
User (cybra7:(none)): je
331 Enter password.
Password:
230 JE logged on.
ftp> cd qgpl
250 "QGPL" is current library.
ftp> lcd d:\savefile
Local directory now D:\savefile
ftp> bin
200 Representation type is binary IMAGE.
ftp> put pjsys60
200 PORT command successful.
150 Sending file to member PJSYS60 in file PJSYS60 in library QGPL.
250 File transfer completed successfully.
1752960 bytes sent in 40.24 seconds (43.56 Kbytes/sec)
ftp> put pjuser60
200 PORT command successful.
150 Sending file to member PJUSER60 in file PJUSER60 in library QGPL.
250 File transfer completed successfully.
1182720 bytes sent in 27.18 seconds (43.52 Kbytes/sec)
ftp>

```

Figure 2 An example of a FTP session transferring the savefiles to the iSeries

7. Back on the iSeries, use the “RSTLIB” command to extract the PJSYS60 library from the savefile. (Ex. “RSTLIB SAVLIB(PJSYS60) DEV(*SAVF) SAVF(QGPL/PJSYS60)”). Repeat this process for the PJUSER60 savefile

```
Restore Library (RSTLIB)

Type choices, press Enter.

Saved library . . . . . > PJSYS60      Name,
Device . . . . . > *SAVF          Name,
                        + for more values
Save file . . . . . PJSYS60      Name
  Library . . . . . QGPL        Name,
```

Figure 3 Restoring the library on the iSeries

Stop IIS Admin Service if port 80 not working